

IQSweb

V5.0.0 to V6.0.0 Upgrade Instructions

Please follow this document if you are upgrading your IQSweb 5.0.0 installation to V6.0.0. If you are performing a new installation of IQSweb or upgrading from V3.1.2 or earlier, please use the main installation instructions located at <http://vdatasys.com>.

Backup your IQSweb database before proceeding with the upgrade! The IQSweb installer will modify the database. See [Reference D](#) for instructions on backing up the IQSweb database.

Please Note: You do not need to uninstall IQSweb V4.0.x or V5.0.0 before proceeding with this upgrade. This installer will upgrade the existing installation.

SQL Server Requirements

IQSweb V6 requires SQL Server 2012 or later. If you are upgrading your database server, please upgrade to the latest version, SQL Server 2019.

- If installed, appears as
 - Microsoft SQL Server 201x'
 - Microsoft SQL Server Management Studio Express (you may not see Express on the end depending on your install version).
- If not installed, go to IQSweb Reference B for Instructions.

Please note, upgrading the SQL Server instance does not automatically upgrade the IQSweb database. That requires changing the compatibility level of the database.

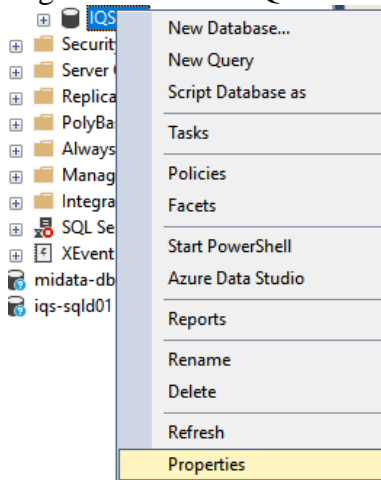
To change the compatibility level:

1. Open SQL Server Management Studio.
2. Connect to the SQL Server instance where the IQSweb database resides.

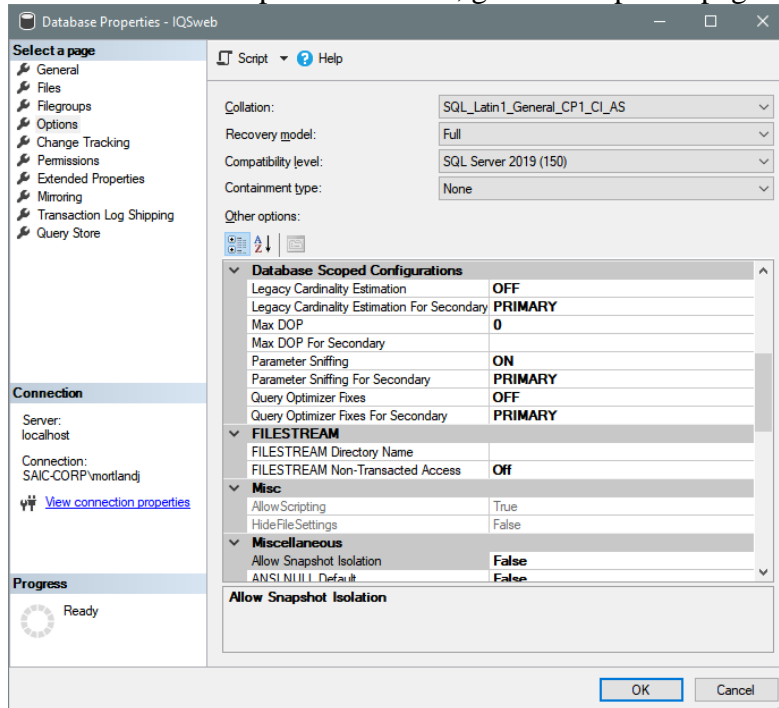
2/27/2020

IQSweb V5.0.0 to V6.0.0 Upgrade Instructions

3. Right-click on the IQSweb database.



4. In the Database Properties window, go to the Options page.



5. Ensure that the Compatibility level is set to **SQL Server 2012 (110)** or later. For the longest term compatibility in the future, select the latest level (currently **SQL Server 2019 (150)**).
6. Click **OK**.

IQSweb V6.0.0 IIS Configuration

The IQSweb V6.0.0 installer will automatically configure Internet Information Services (IIS) to have the IQSwebPool application pool's Start Mode to be AlwaysRunning and to have Auto Start enabled. The installer will also configure the IQSweb web application to have ServiceAutoStart enabled and create a ServiceAutoStartProvider for the application to utilize.

These configuration changes are required to allow IQSweb to be running at all times and perform overnight batch processing updates needed to keep IRWIN up-to-date with the latest information

2/27/2020

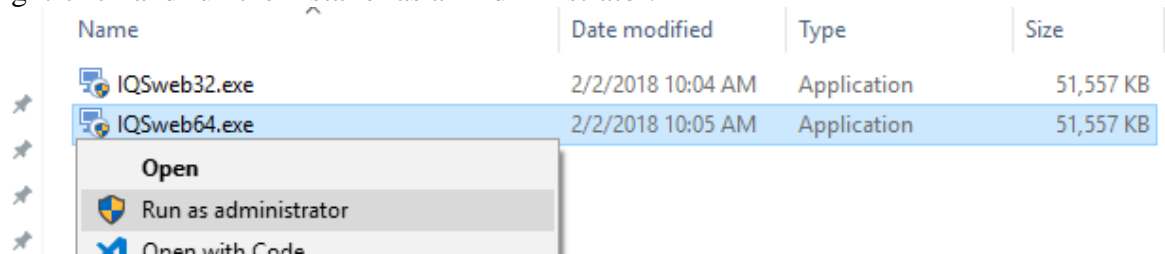
IQSweb V5.0.0 to V6.0.0 Upgrade Instructions

from IQSweb and to import experience records. If the IQSweb system is offline when the batch processing jobs are scheduled to run, the jobs will begin once the system is back online.

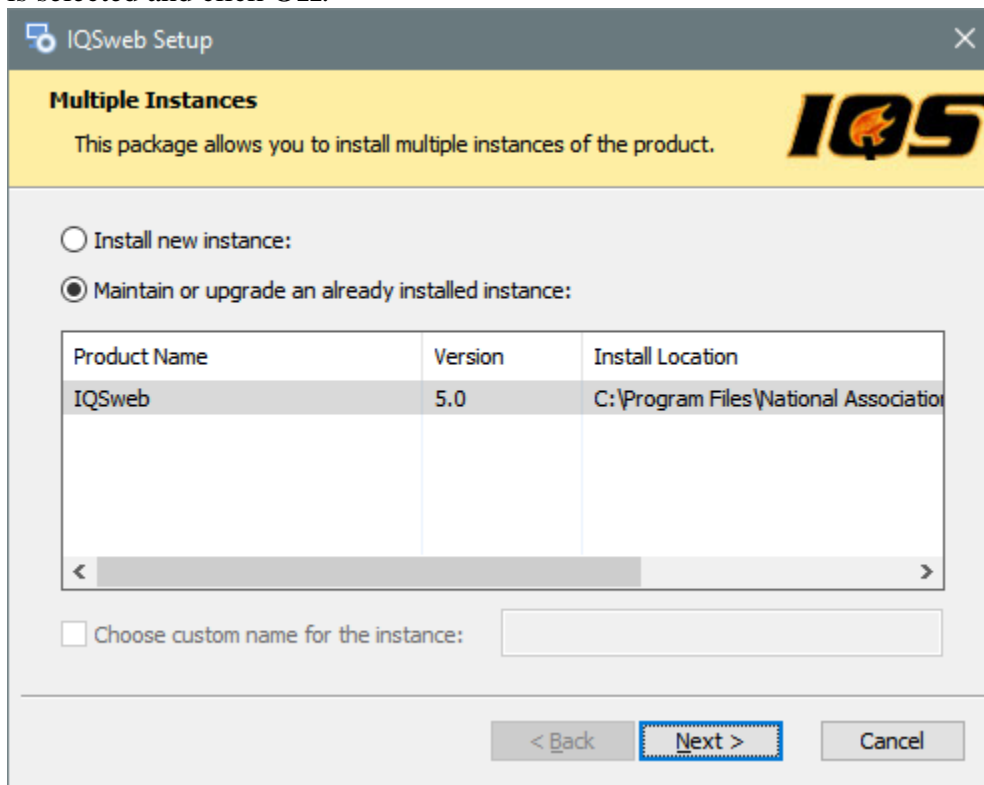
If IQSweb V6.0.0 is being deployed to a production server via a file copy (e.g. running an installer on a QA or development machine and copying the files and manually configuring IIS to run the application), IIS will need to be manually configured to allow the batch processing in IQSweb. Please contact your IQS regional representative to get a PowerShell script and instructions on performing the configuration.

Upgrading IQSweb from 5.0.0 to V6.0.0

1. On the computer where IQSweb is installed, download the V6.0.0 installer. Select the 64-bit version if you previously installed the 64-bit version of IQSweb V6.0.0. Otherwise, download the 32-bit installer.
2. Right-click and run the installer as an Administrator.



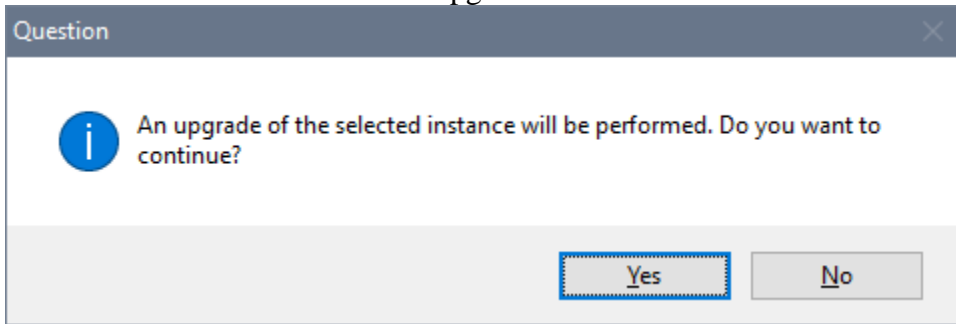
3. Select **Maintain or upgrade an already installed instance**. Make sure the IQSweb instance is selected and click **OK**.



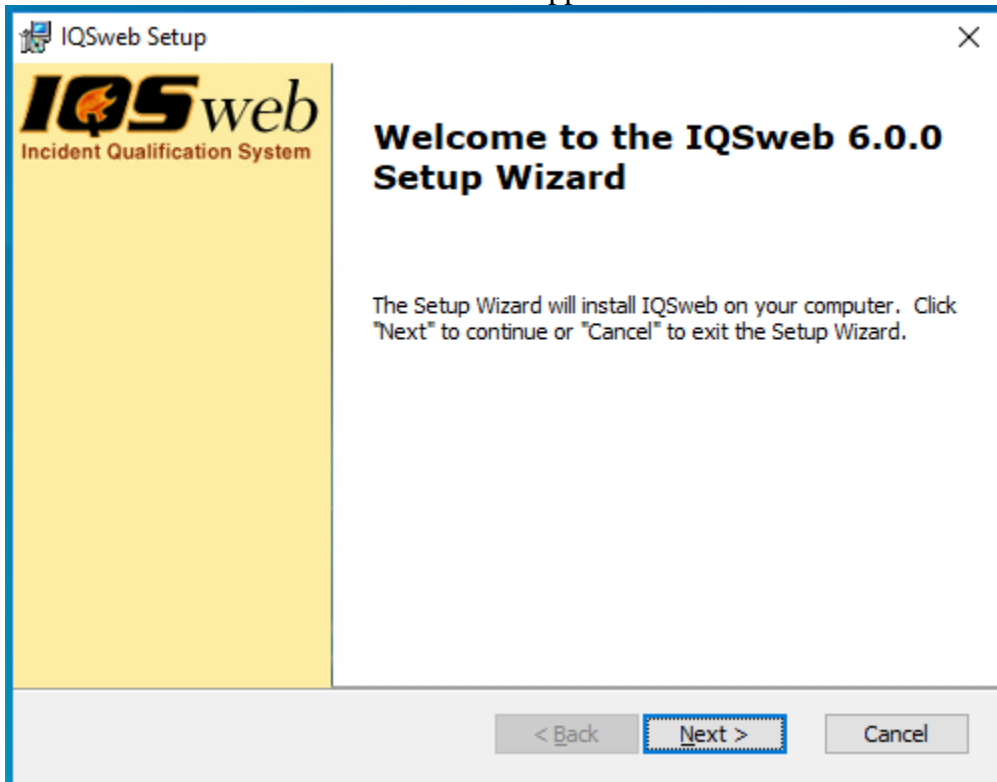
2/27/2020

IQSweb V5.0.0 to V6.0.0 Upgrade Instructions

4. You will be asked to confirm the upgrade. Click **Yes**.



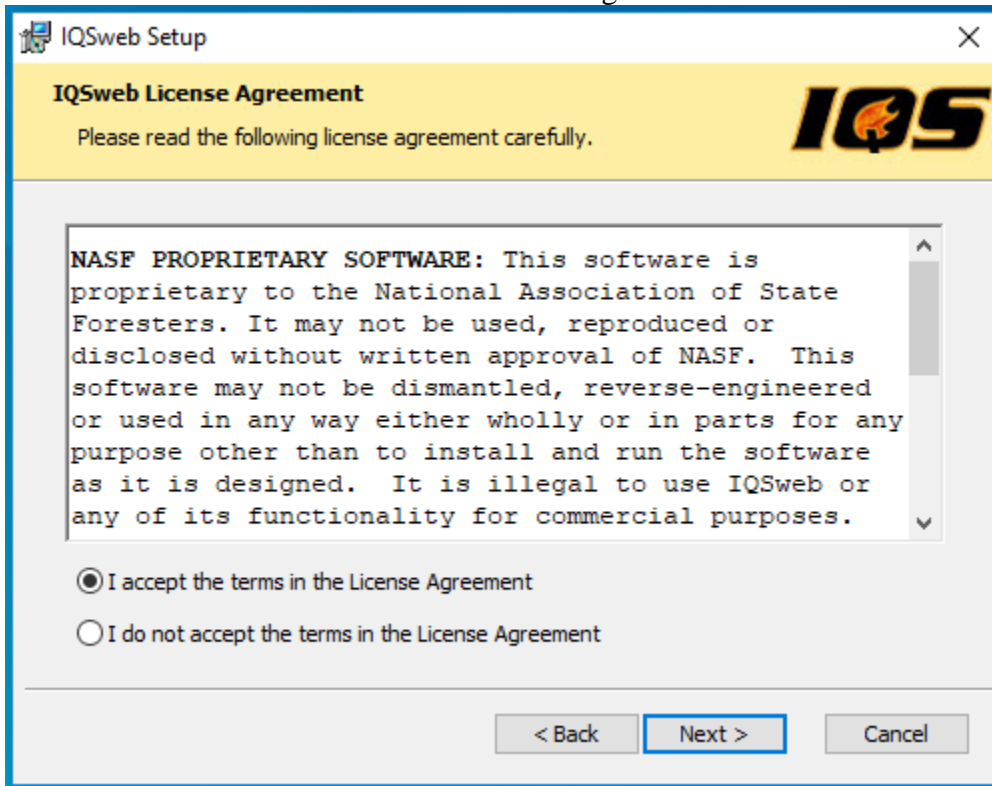
5. The normal installation screens will then appear. Click **Next** to continue.



2/27/2020

IQSweb V5.0.0 to V6.0.0 Upgrade Instructions

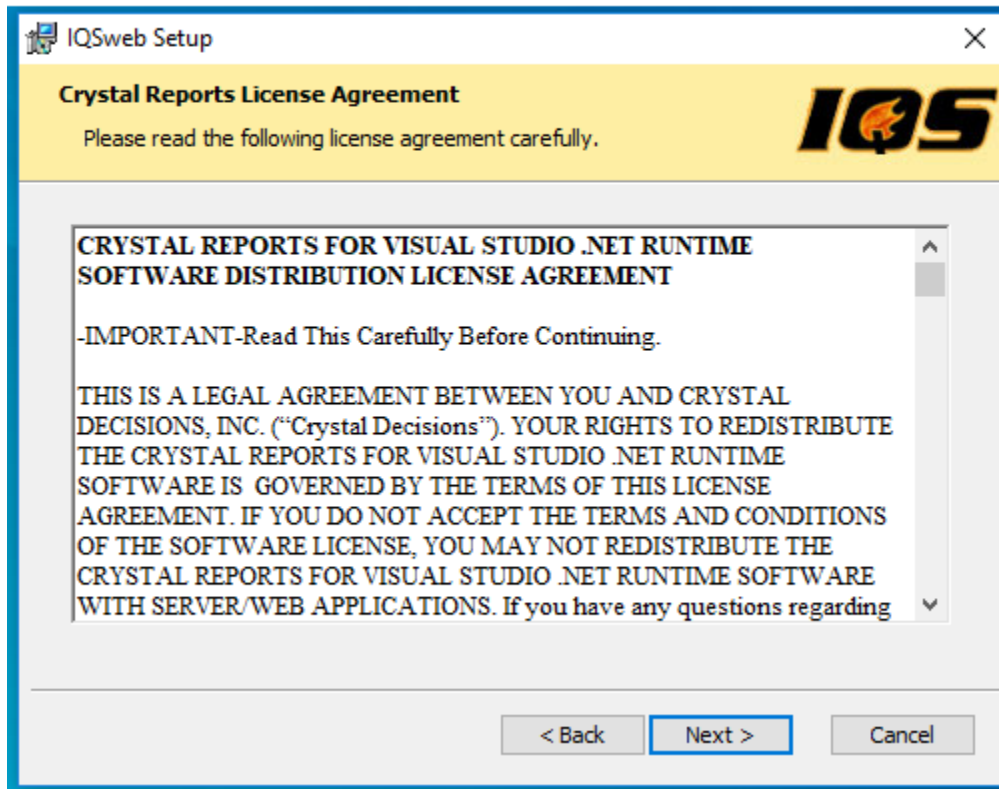
6. Select the radio button to confirm the license agreement and click **Next**.



2/27/2020

IQSweb V5.0.0 to V6.0.0 Upgrade Instructions

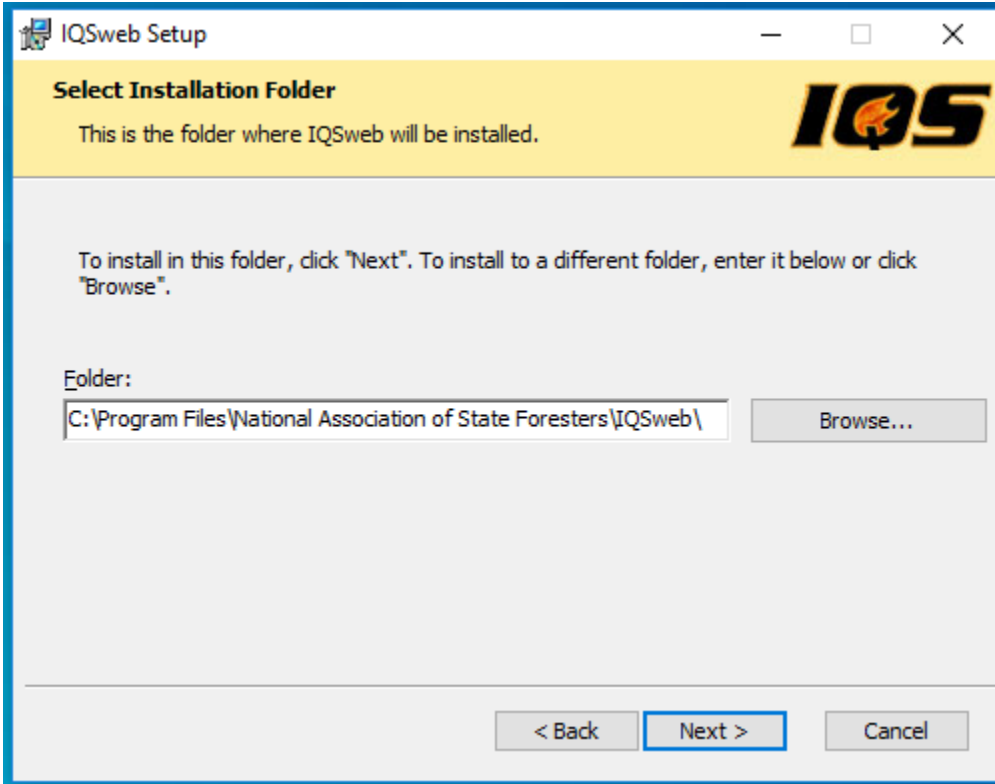
7. Click **Next** to agree to the Crystal Reports license agreement.



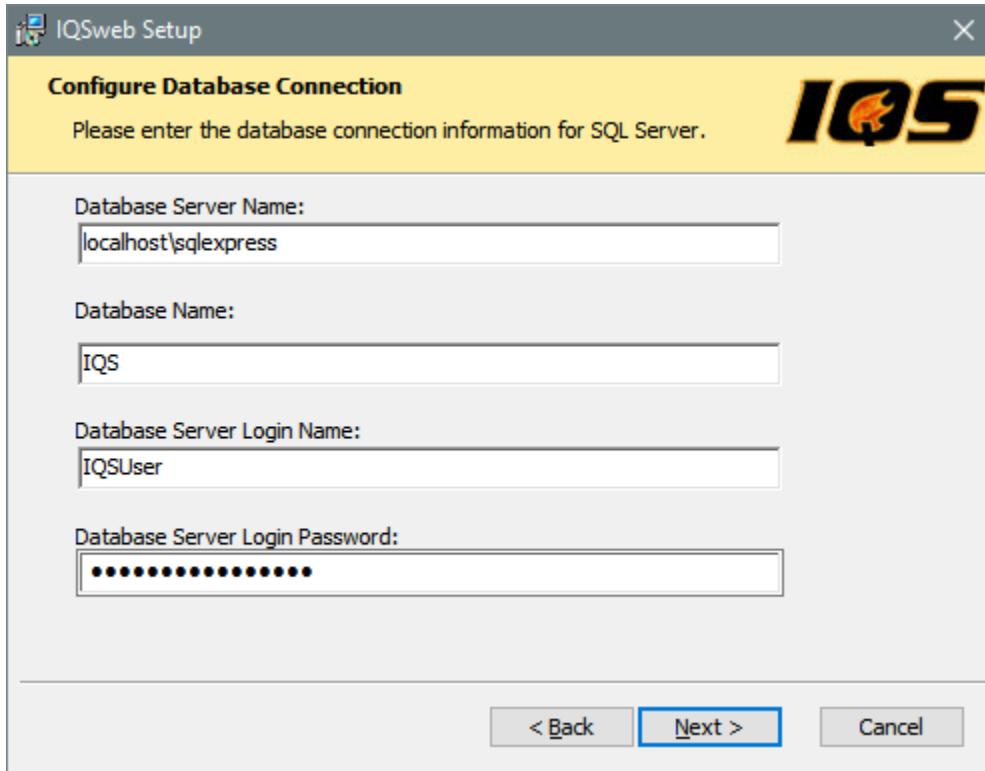
2/27/2020

IQSweb V5.0.0 to V6.0.0 Upgrade Instructions

8. Choose the installation folder for IQSweb. This should be the same folder by default as the 5.0.0 installation.



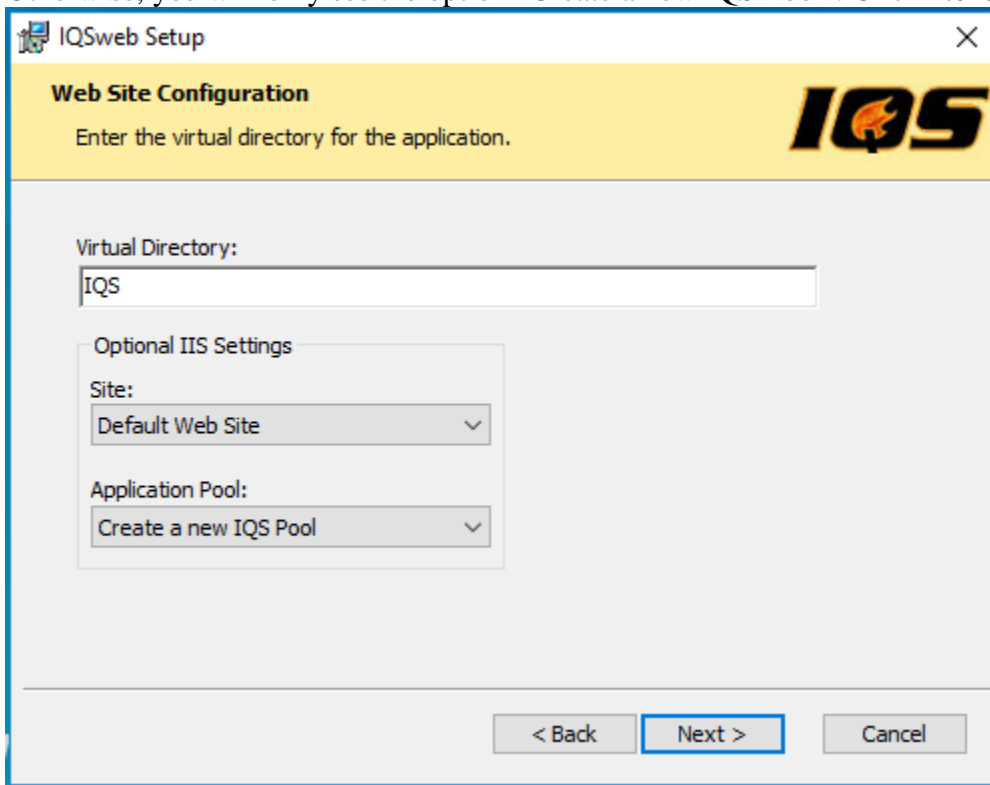
9. Confirm the database connection settings. These settings will be transferred from IQSweb 5.0.0. Click **Next**.



2/27/2020

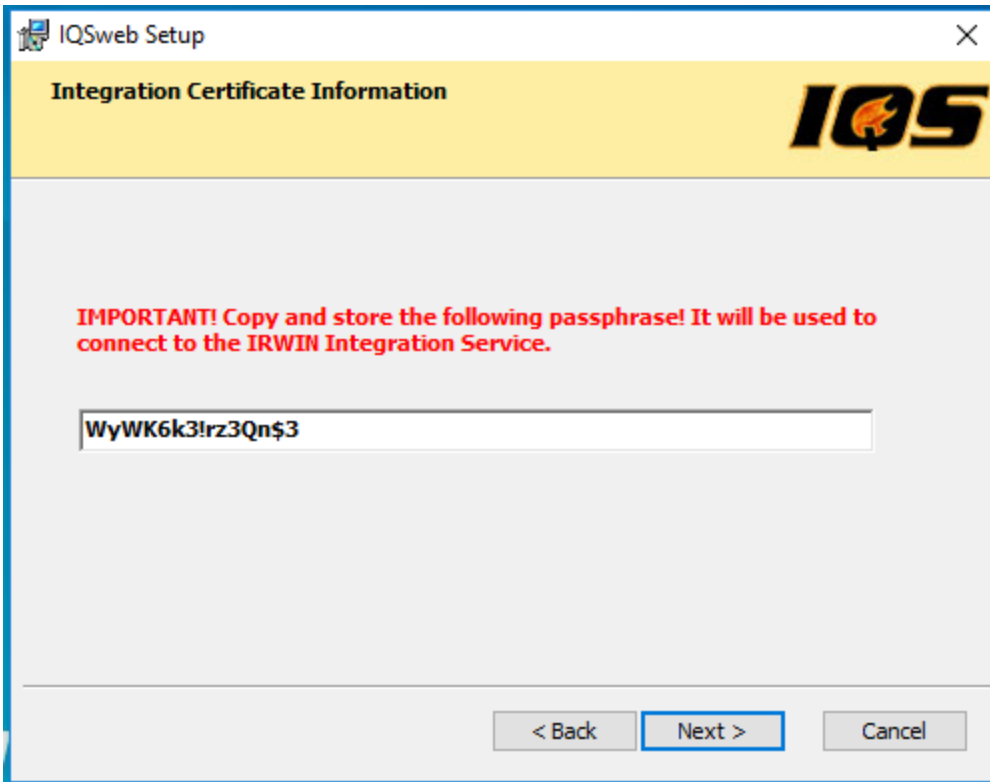
IQSweb V5.0.0 to V6.0.0 Upgrade Instructions

10. Confirm the web site configuration. These settings will be transferred from IQSweb 5.0.0. Please note that IQSweb is now using its own application pool. If in V4 or V5 you had selected "Create a new IQS Pool", you will see that the only option is "IQSWebPool". Otherwise, you will only see the option "Create a new IQS Pool". Click **Next**.



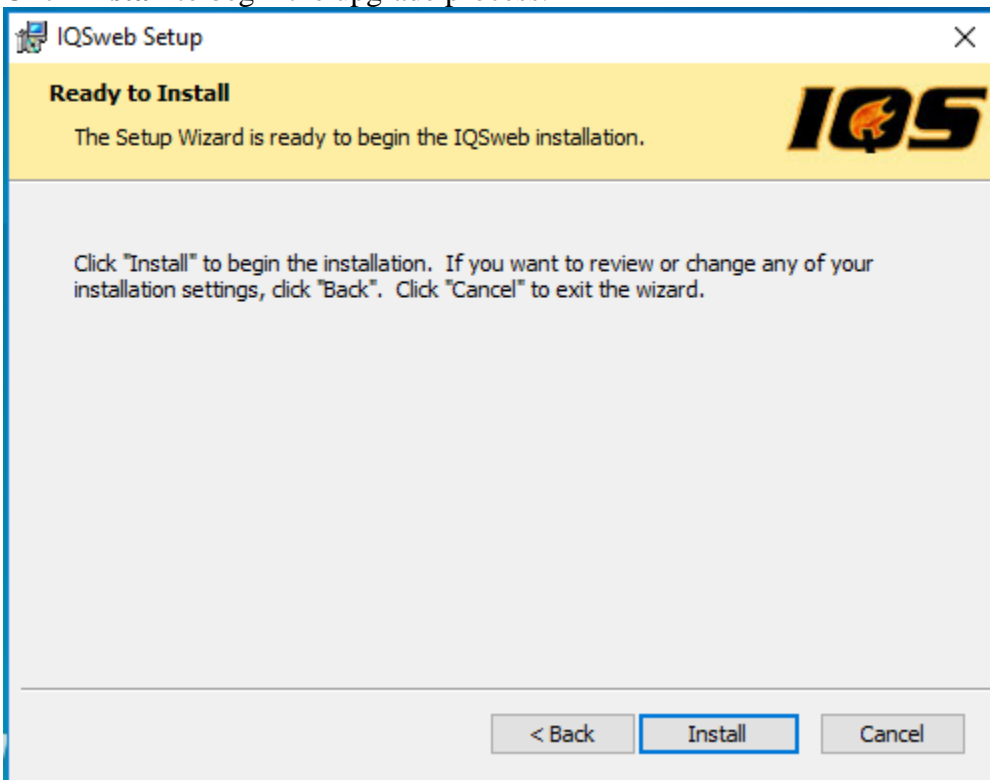
The screenshot shows the "Web Site Configuration" dialog box in the "IQSweb Setup" application. The dialog has a yellow header with the "IQS" logo and the text "Enter the virtual directory for the application." Below the header, there is a text box labeled "Virtual Directory:" containing the text "IQS". Underneath, there is a section titled "Optional IIS Settings" which contains two dropdown menus: "Site:" with "Default Web Site" selected, and "Application Pool:" with "Create a new IQS Pool" selected. At the bottom of the dialog, there are three buttons: "< Back", "Next >" (which is highlighted with a blue border), and "Cancel".

11. Copy and save the **Integration Certificate Passphrase**. This passphrase needs to be given to your IQS Manager. The IQS Manager will need this Passphrase for configuring IRWIN within the IQS application. **THIS IS YOUR ONLY OPPORTUNITY TO COPY THIS PASSPHRASE! DO THIS NOW** and send to your IQS Training Manager.

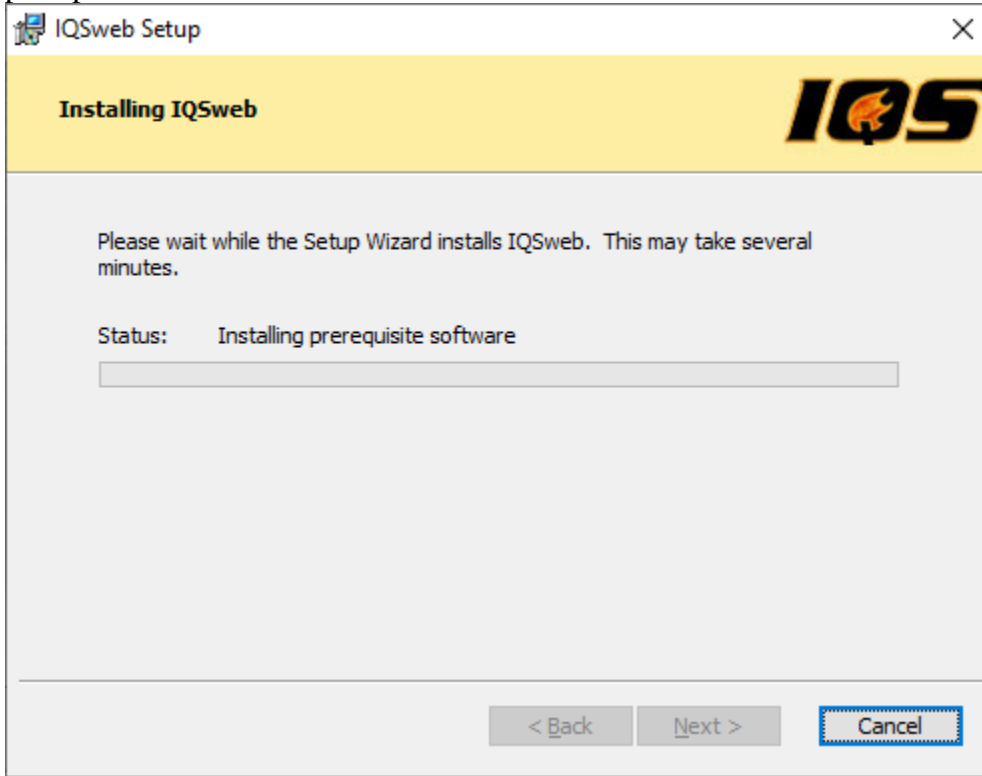


If you have previously installed IQSweb V6.0.0 on this computer, you will instead see a message that the certificate already exists. You will be able to use the existing passphrase. Click **Next**.

12. Click **Install** to begin the upgrade process.



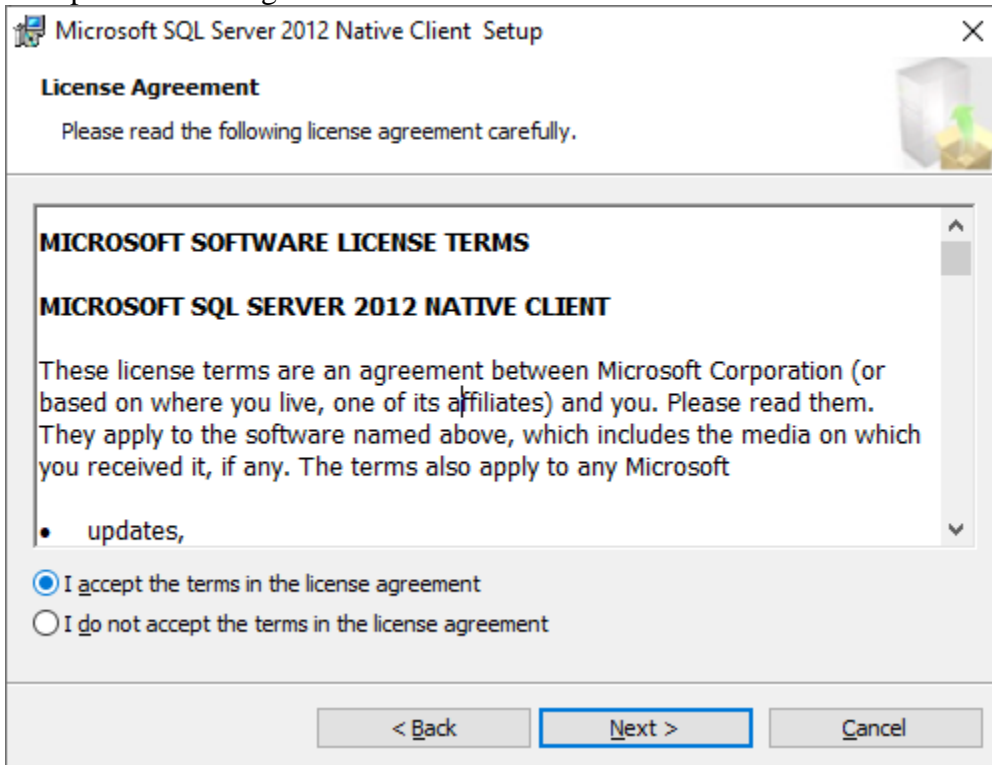
- The IQSweb installer uses **SQL Server 2012 Native Client** to update the IQSweb database. The installer will check to see if the client is installed on the system. If it is not, you will be prompted to install the client.



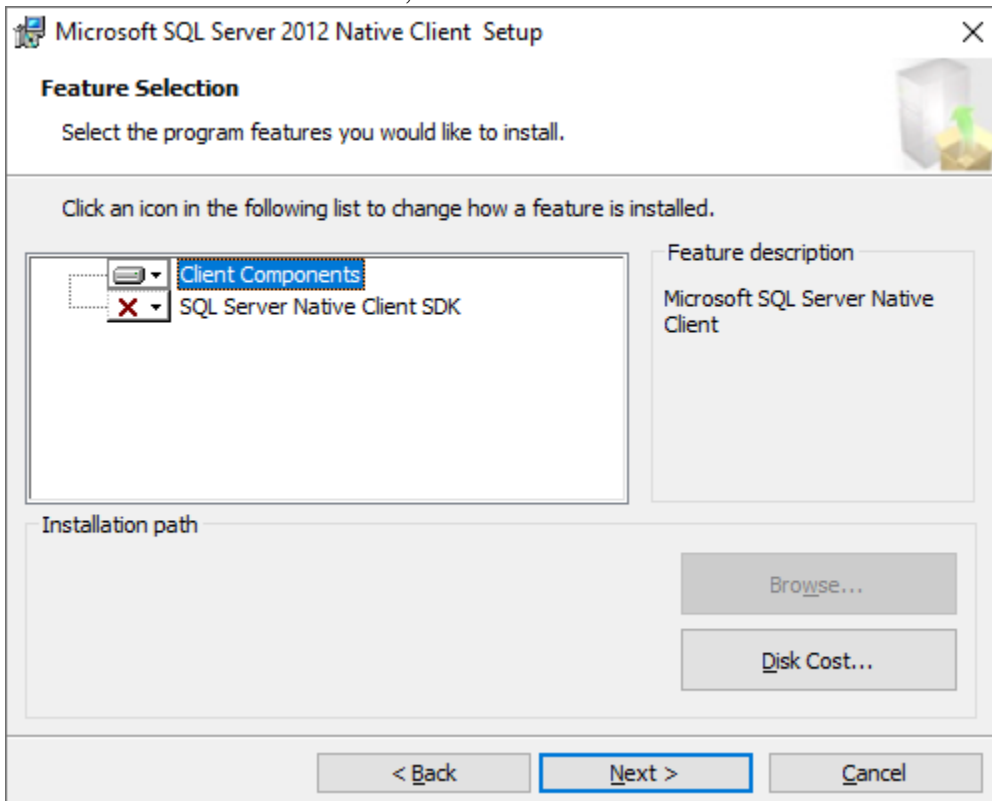
- The **Microsoft SQL Server 2012 Native Client Setup** window will appear (it may be hidden behind the IQSweb installer, please check the task bar for a flashing icon to click). Click **Next**



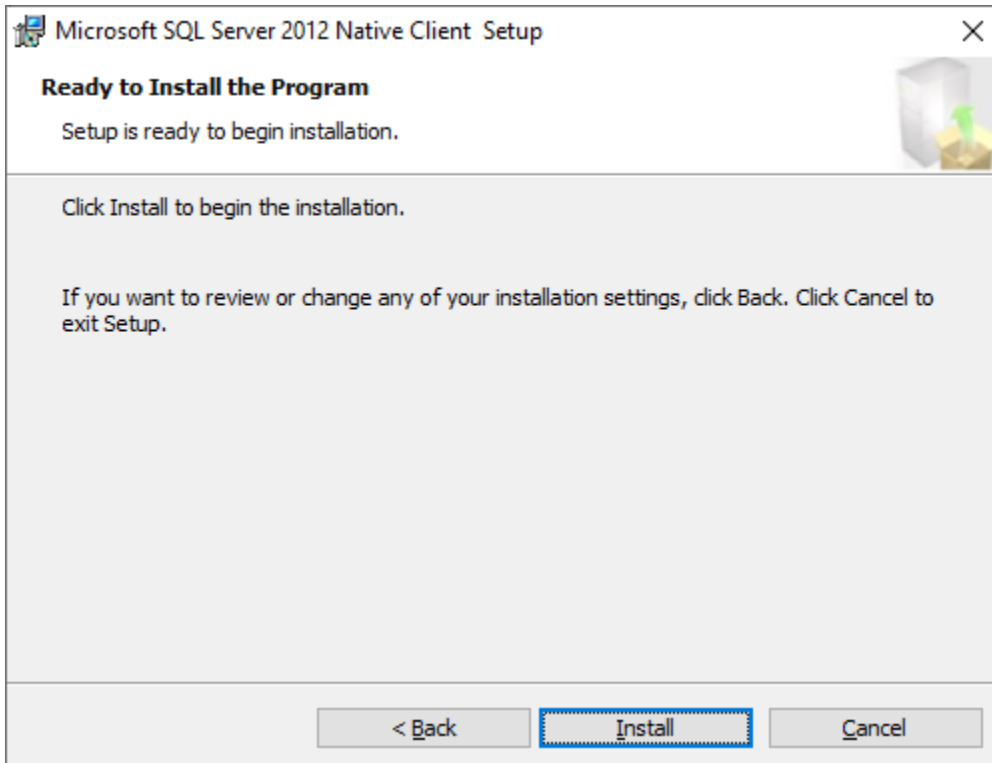
15. Accept the license agreement and click **Next**.



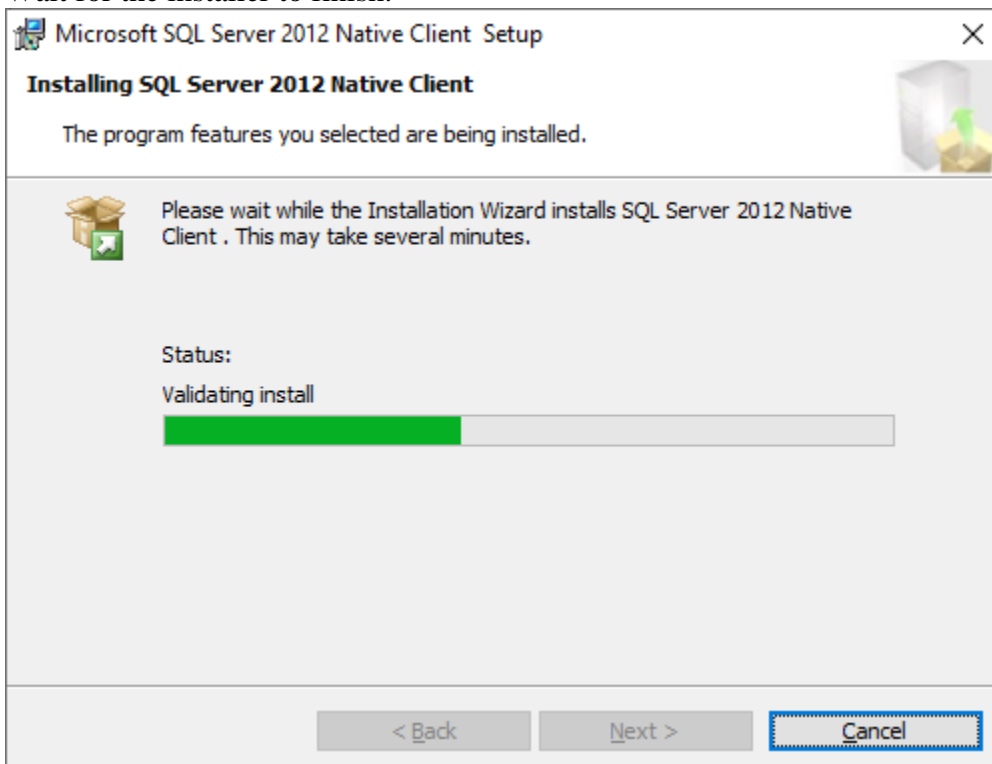
16. At the Feature Selection screen, click **Next**.



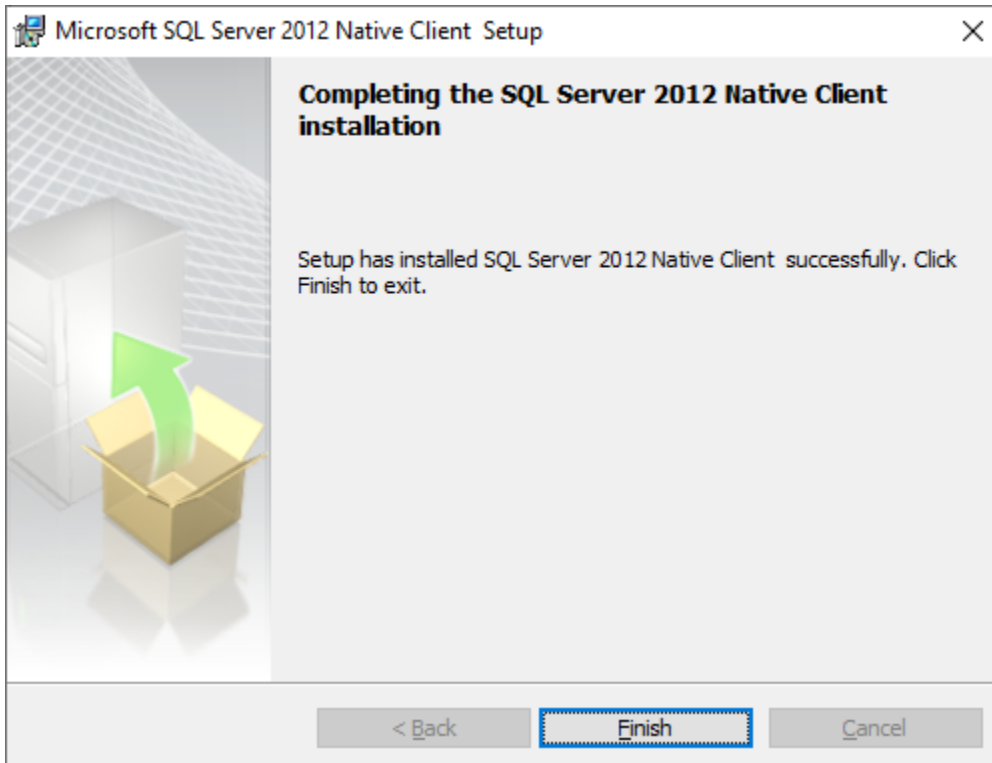
17. Click **Install**.



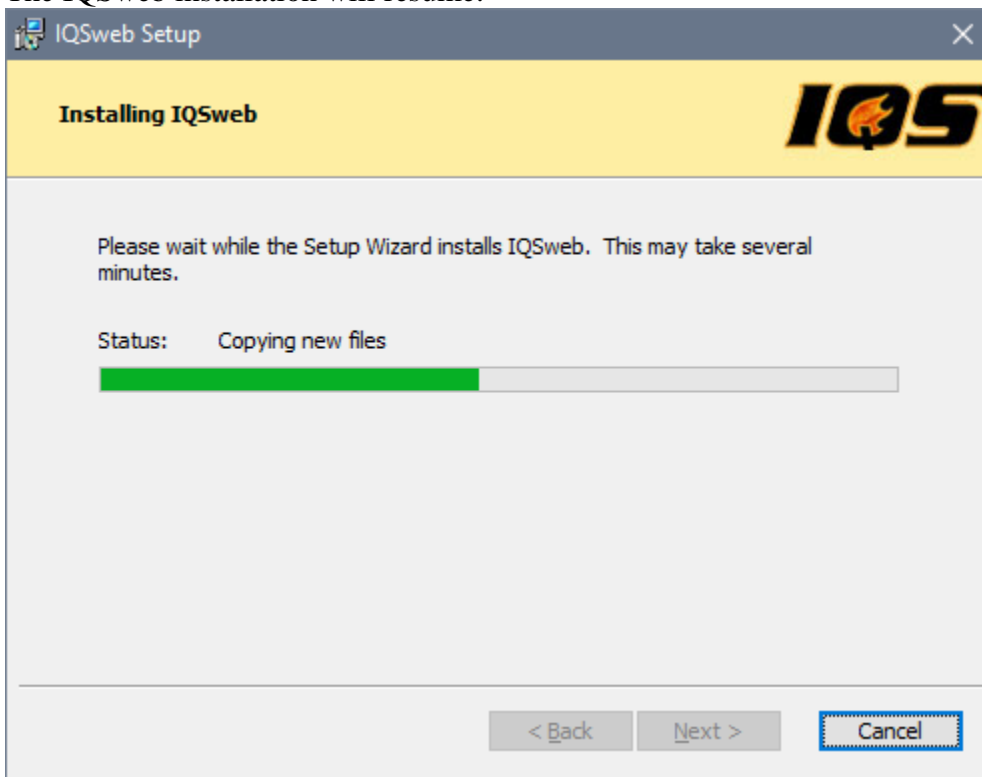
18. Wait for the installer to finish.



19. Click **Finish**.



20. The IQSweb installation will resume.



If this is the first time you installed IQSweb V6 on the computer, you may see a prompt about installing a certificate from **IQSweb CA**. Click **Yes** to install the certificate. This certificate is then used to install a certificate that will be used to encrypt and decrypt the IRWIN

2/27/2020

IQSweb V5.0.0 to V6.0.0 Upgrade Instructions

credentials.



21. Click **Finish** to end the installation.



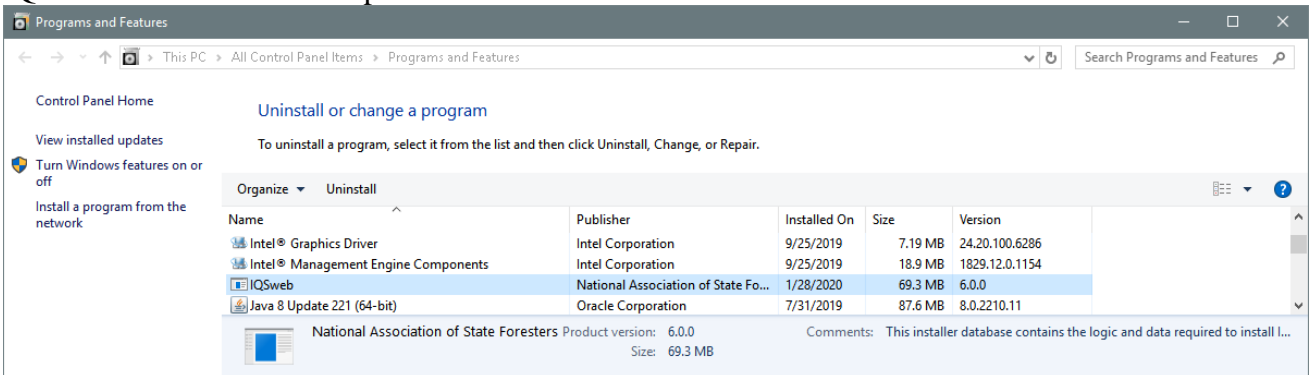
22. Go to the IQS login page and click the About link in the lower left corner. The Database Version should still be 6.0.0. The Program version should be 6.0.0.

About IQSweb

Program Version: V6.0.0

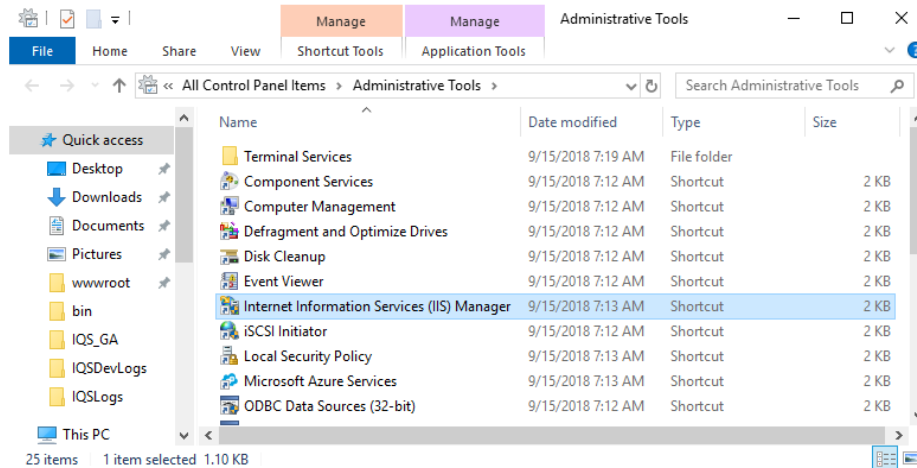
Database Version: V6.0.0

You can also confirm installation by going to **Programs and Features** in the Control Panel. IQSweb should now show up as version 6.0.0.

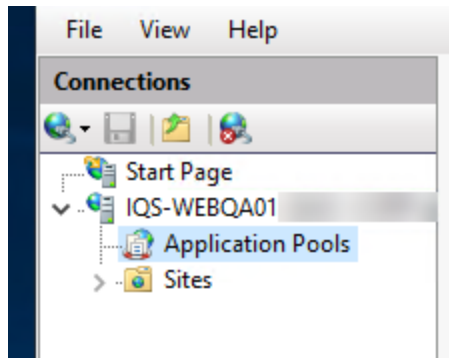


23. If you do not see the login page and the IQS site is not coming up, restart the IQSWebPool application pool in Internet Information Services (IIS).

- a. Go to the **Control Panel**, select **Administrative Tools** and double-click Internet Information Services (IIS) Manager:



- b. Click the caret to expand the server in the **Connections Pane** and select **Application Pools**.



- c. Select the **IQSWebPool** application pool. Then in the **Actions Pane** on the right, select **Recycle**. If the application pool is stopped, select **Start**.

The screenshot shows the 'Application Pools' management console. The main area contains a table with the following data:

Name	Status	.NET CLR V...	Managed Pipel...	Identity	Applications
.NET v4.5	Started	v4.0	Integrated	ApplicationPoolId...	0
.NET v4.5 Classic	Started	v4.0	Classic	ApplicationPoolId...	0
Catalog	Started	v4.0	Integrated	ApplicationPoolId...	2
DefaultAppPool	Started	v4.0	Integrated	ApplicationPoolId...	1
IQSWebPool	Started	v4.0	Integrated	ApplicationPoolId...	1
	Started	v4.0	Integrated	ApplicationPoolId...	2
	Started	v4.0	Integrated	ApplicationPoolId...	3

The 'Actions' pane on the right side of the console includes the following options:

- Add Application Pool...
- Set Application Pool Defa...
- Application Pool Tasks**
- Start
- Stop
- Recycle...**
- Edit Application Pool**
- Basic Settings...
- Recycling...
- Advanced Settings...
- Rename
- Remove
- View Applications
- Help

- d. The application pool should now be restarted and the IQS application should be able to be loaded.