

IQSweb Reference D

SQL Server Express 2005 SP2 Installation Instructions

Step 1: Download the installation files for SQL Server 2005 Express and SQL Server Express Management Studio

1. Download Microsoft SQL Server Express 2005 sp2 from the following link. Select either the 32 or the 64 bit install file as appropriate for your computer.

<http://www.microsoft.com/downloads/details.aspx?displaylang=en&FamilyID=31711D5D-725C-4AFA-9D65-E4465CDDFF1E7>

2. Download Microsoft SQL Server Management Studio Express sp2. Select either the 32 or the 64 bit install file as appropriate for your computer.

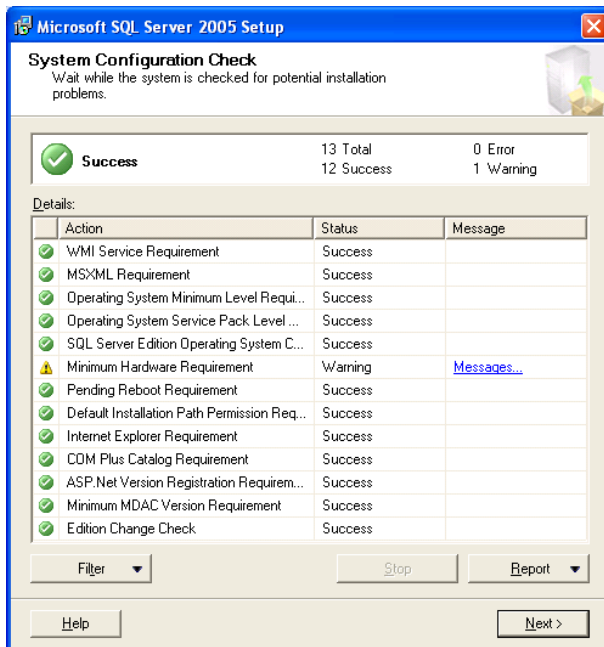
<http://www.microsoft.com/downloads/details.aspx?FamilyId=6053c6f8-82c8-479c-b25b-9aca13141c9e&DisplayLang=en>

Step 2: Install Microsoft SQL Server 2005 sp2

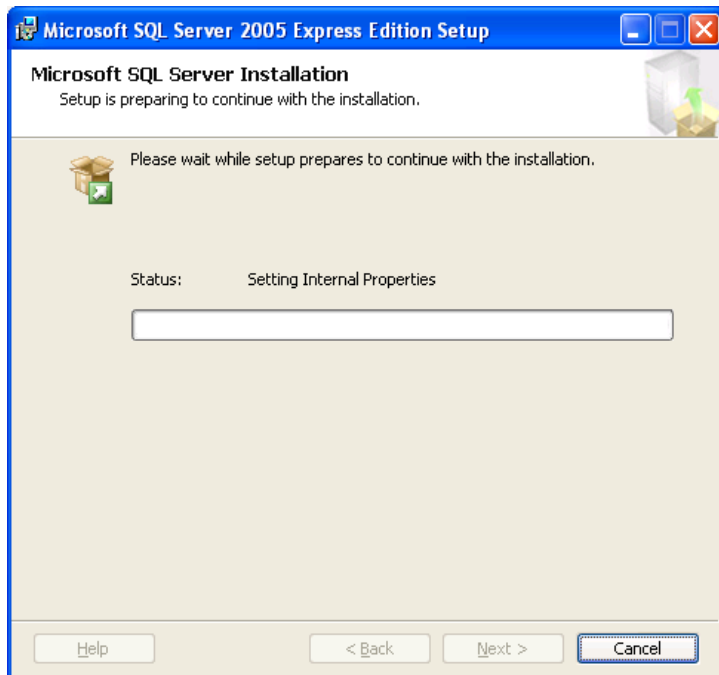
1. Select Start/Run. From the Run screen, browse to the location where the SQL Server 2005 Express installation file is located and select that file to open. You should see the welcome screen shown below. Click **Next** to continue.



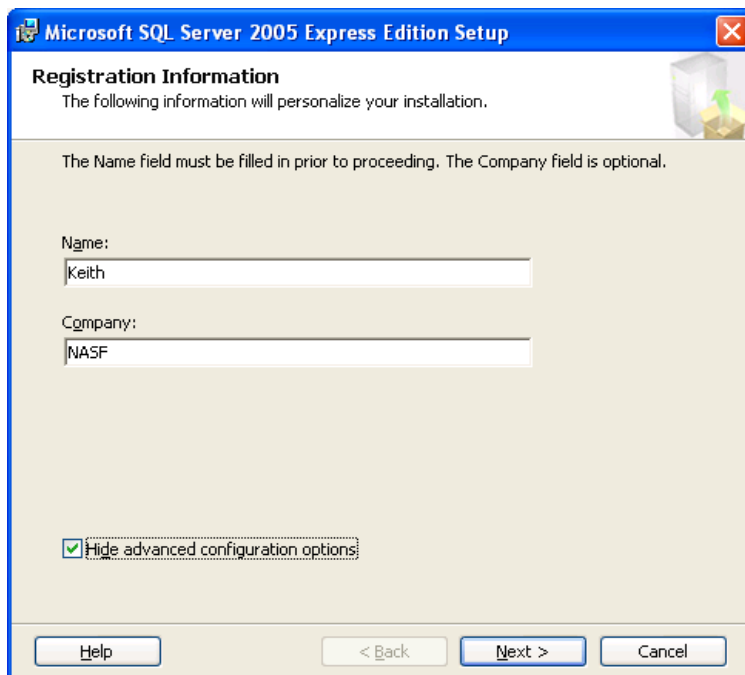
2. Once the System Configuration Check is complete, click **Next**.



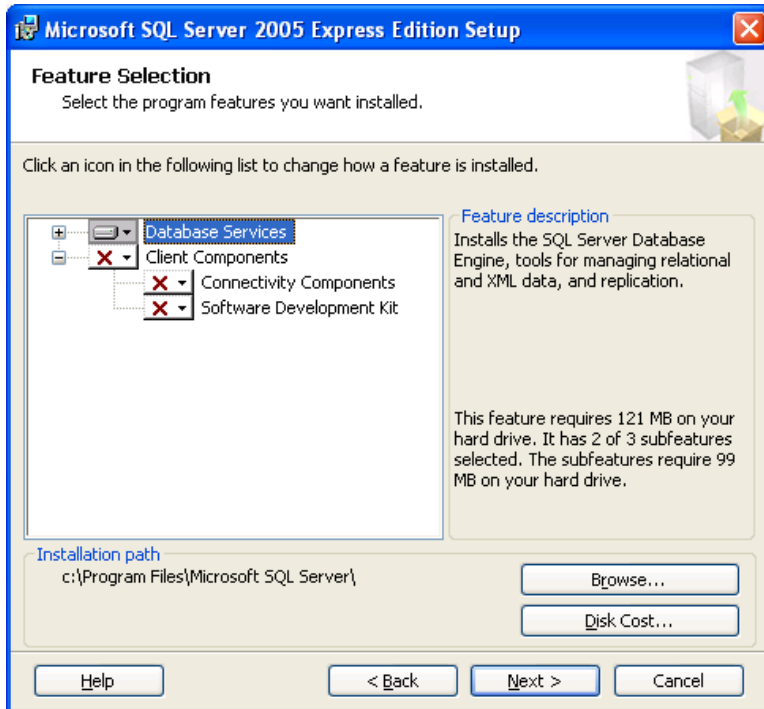
3. The screen shown below will be displayed. Wait for the installation to continue processing.



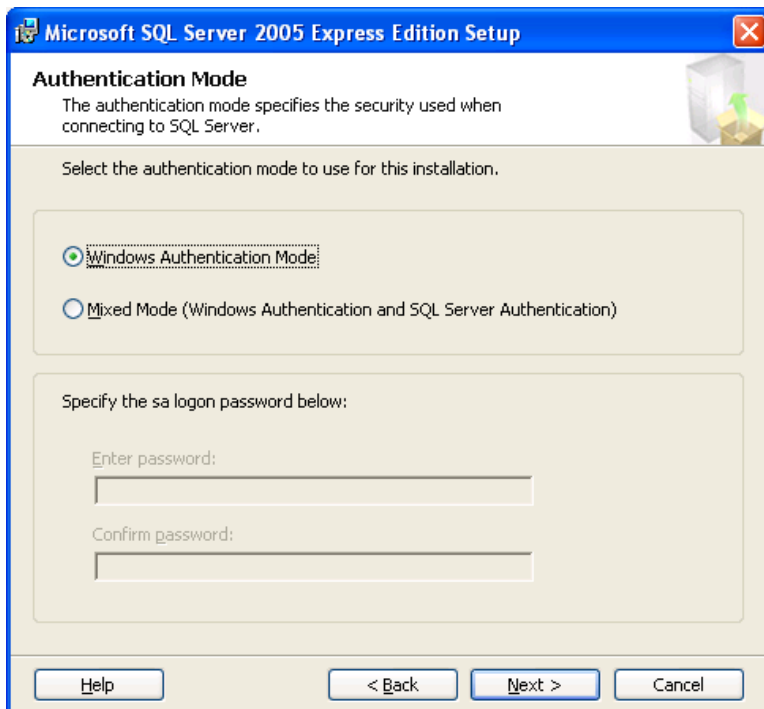
4. On the Registration screen, enter your name and company name and then click **Next**.



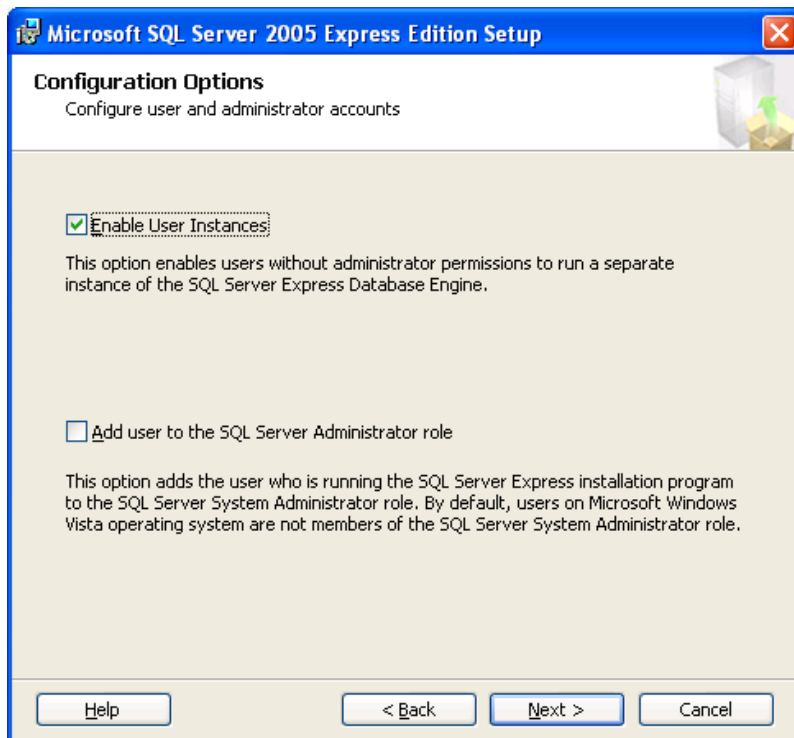
5. On the Feature Selection screen, leave all default values selected and click **Next**.



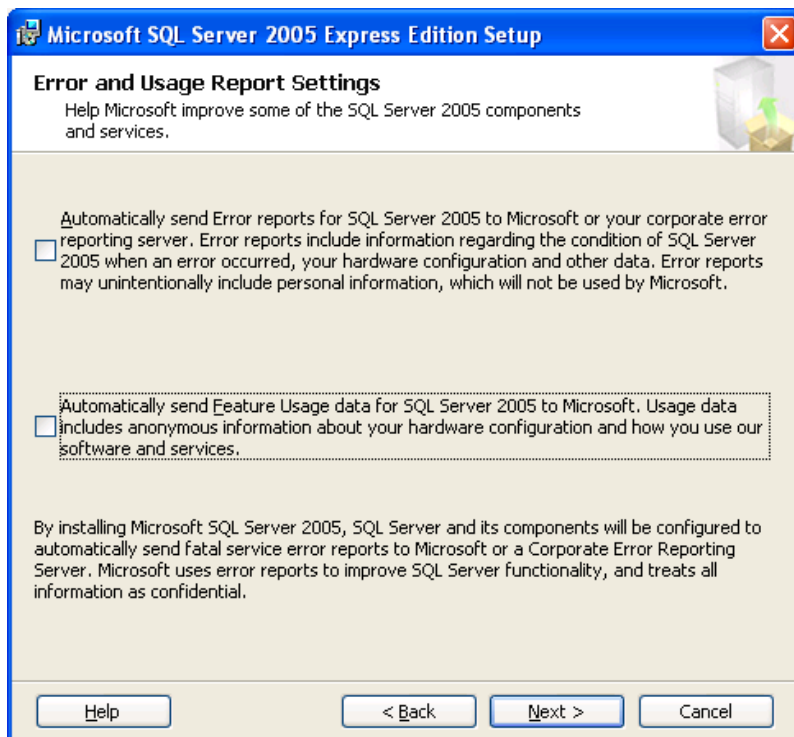
6. On the Uthentication Mode screen, leave the dafault value of “Windows Authentication Mode “ selected and then click **Next**.



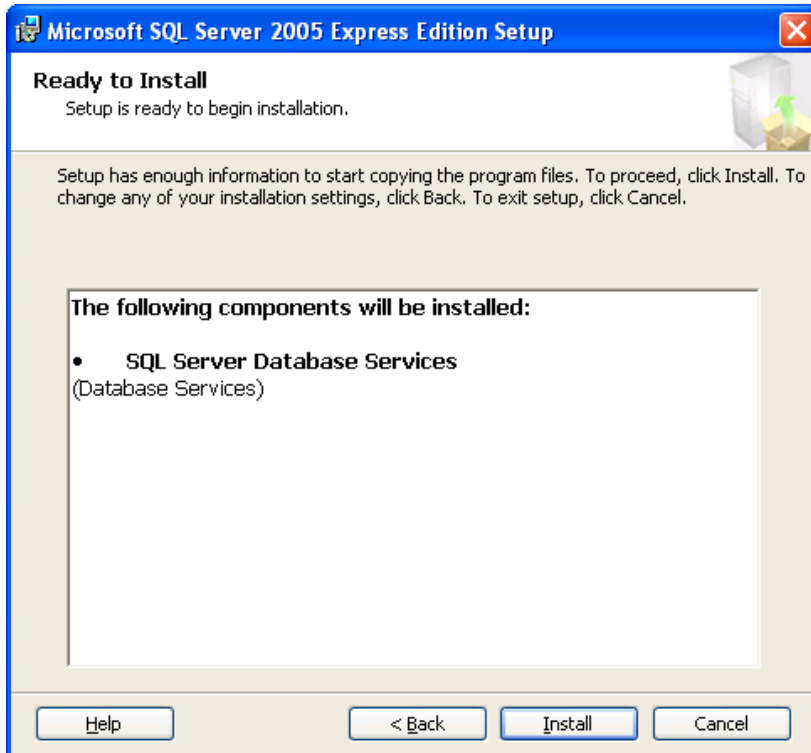
7. On the Configuration options screen, leave the default value of “Enable User Instances” selected and click **Next**.



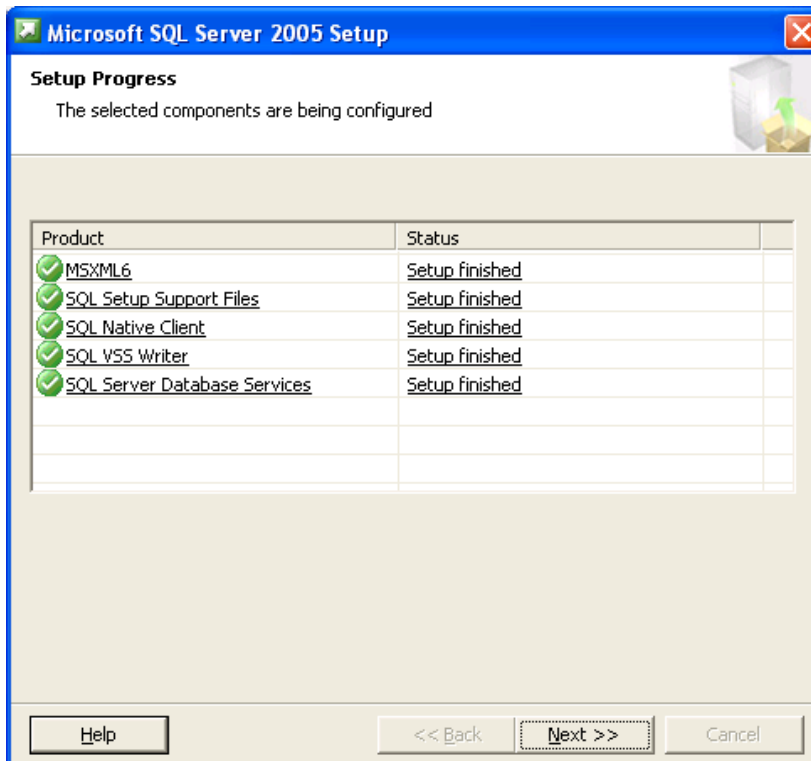
8. On the Error and Usage Report Settings, leave all boxes unchecked and click **Next**.



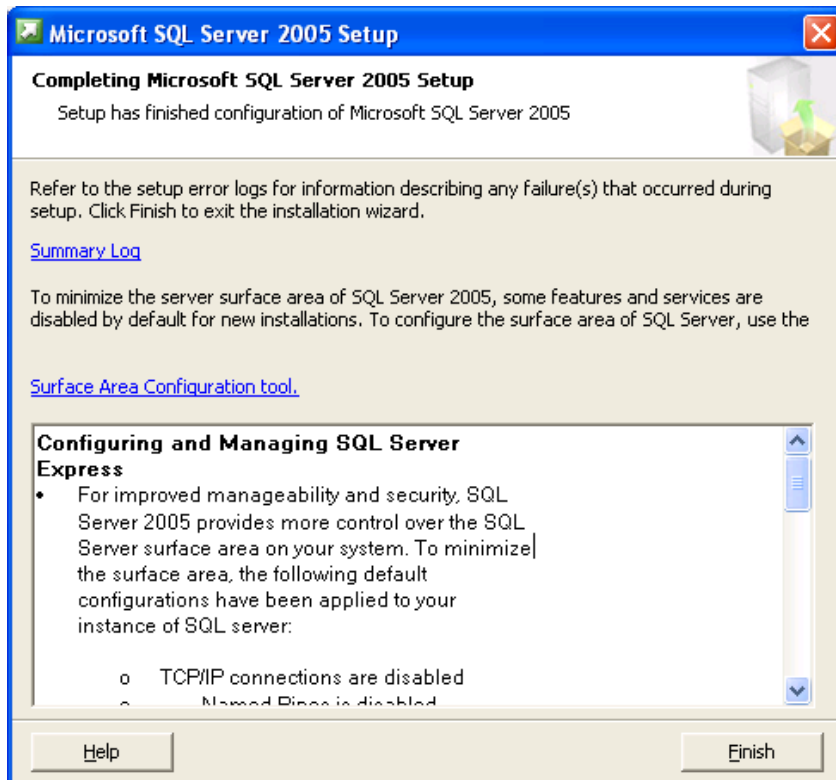
8. On the Ready to Install screen, click **Install**.



9. Click **Next** to continue.

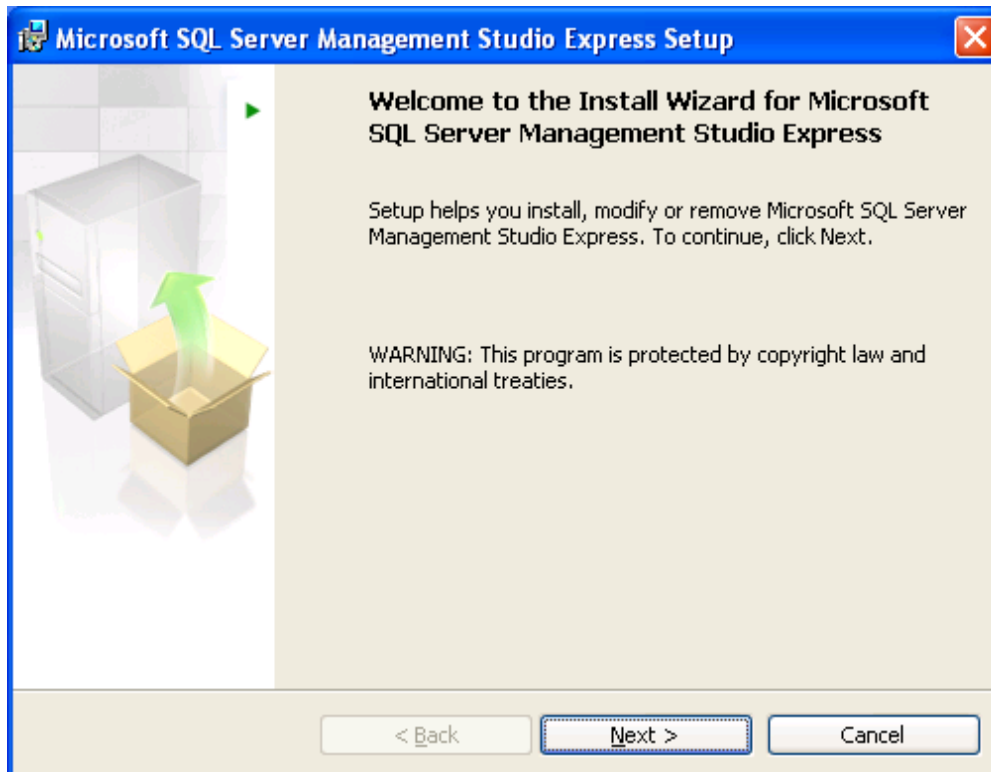


10. Click **Finish** to complete the installation. Your system may reboot.

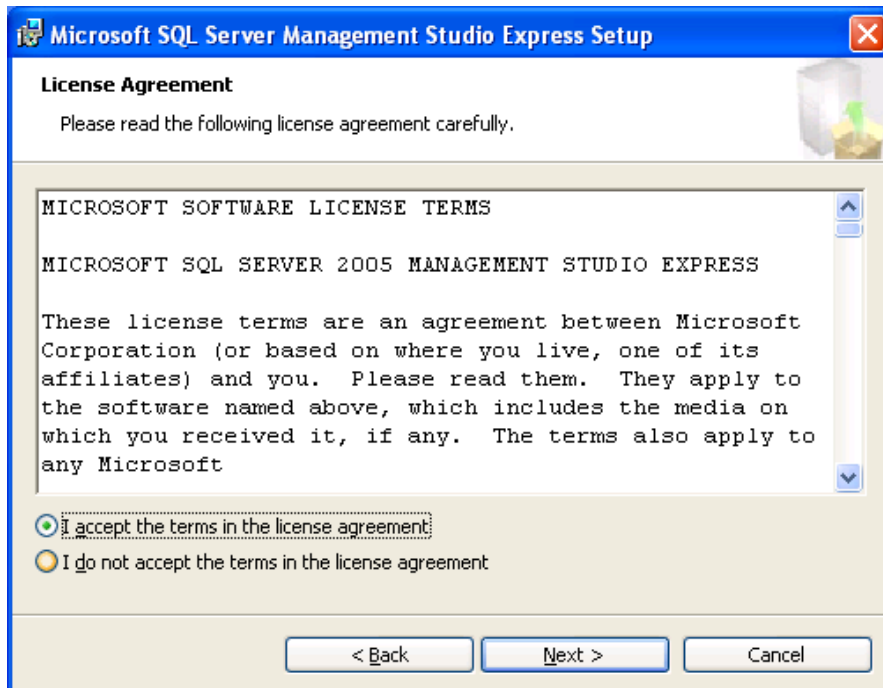


Step 3: Install Microsoft SQL Server Management Studio Express

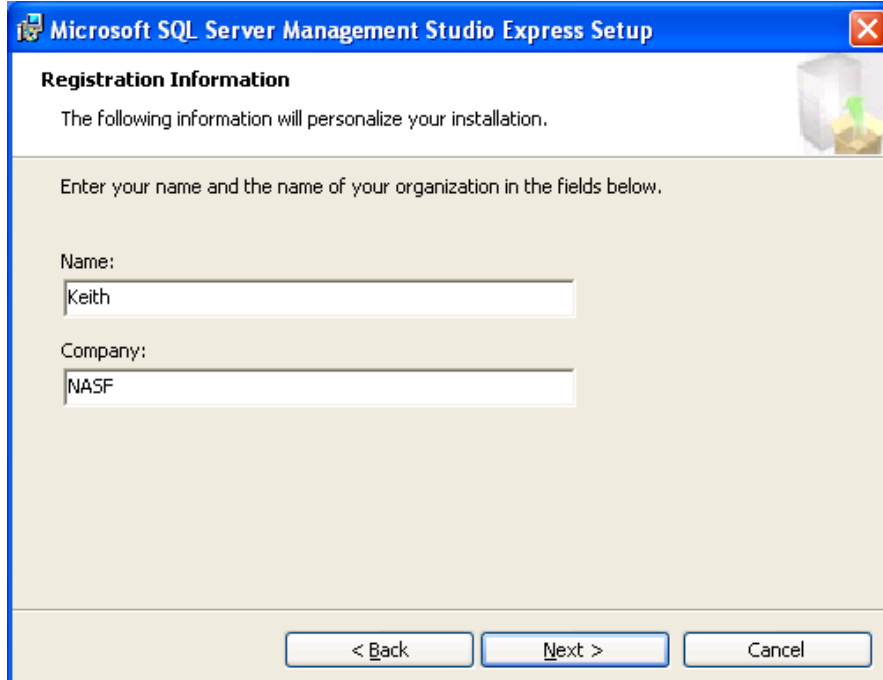
1. Select Start/Run. From the Run screen, browse to the location where the SQL Server 2005 Express Management Studio installation file is located and select that file to open. You should see the welcome screen shown below. Click **Next** to continue.



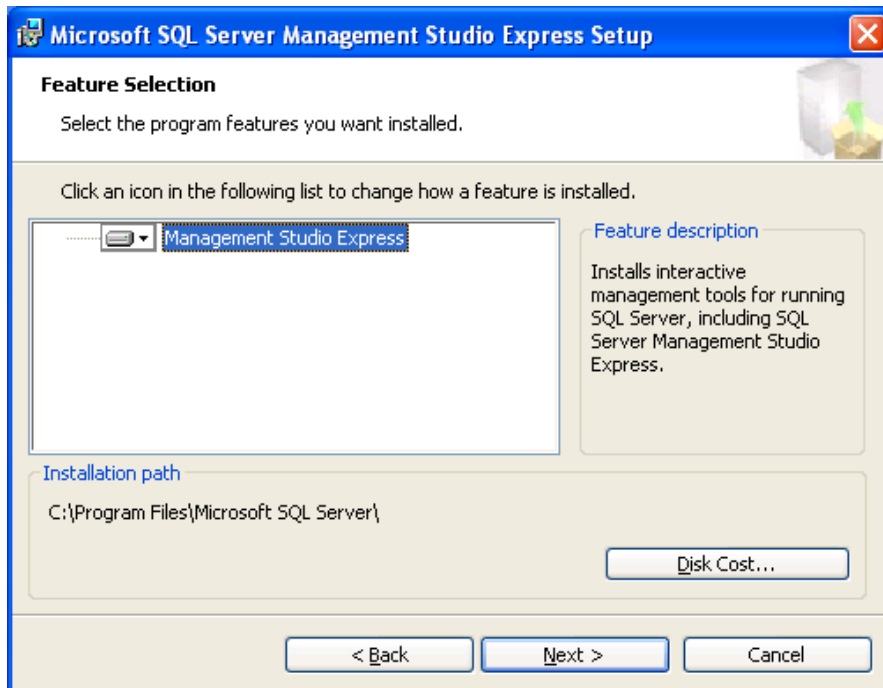
2. Accept the License Agreement and click **Next**.



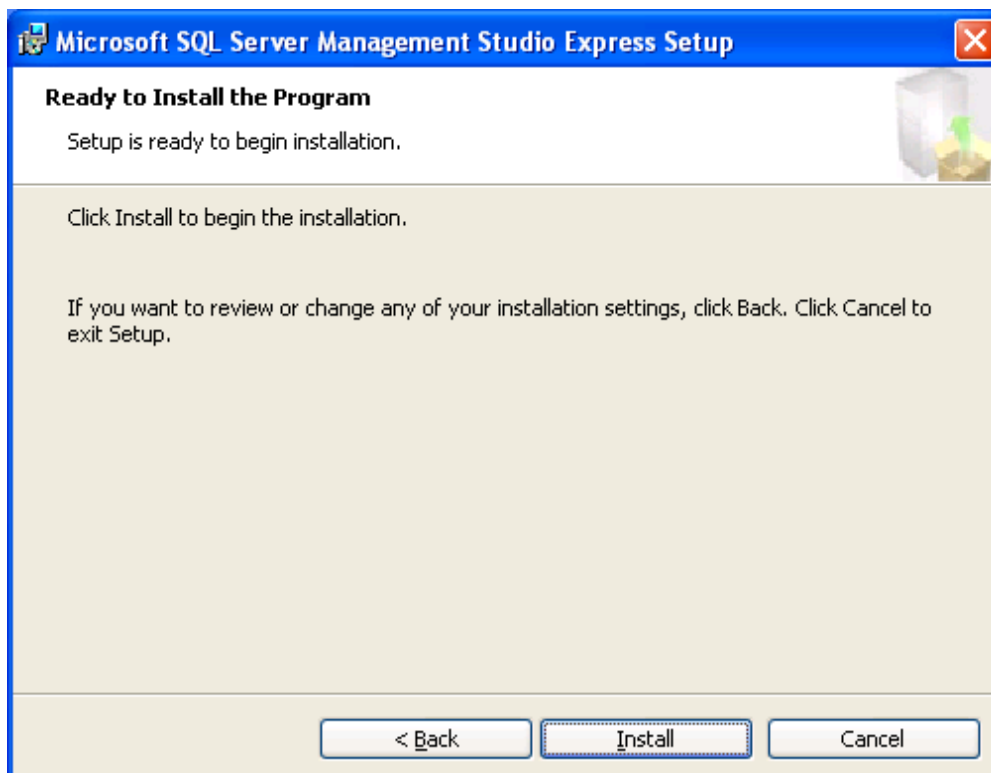
3. On the Registration screen, enter your name and company name and then click **Next**.



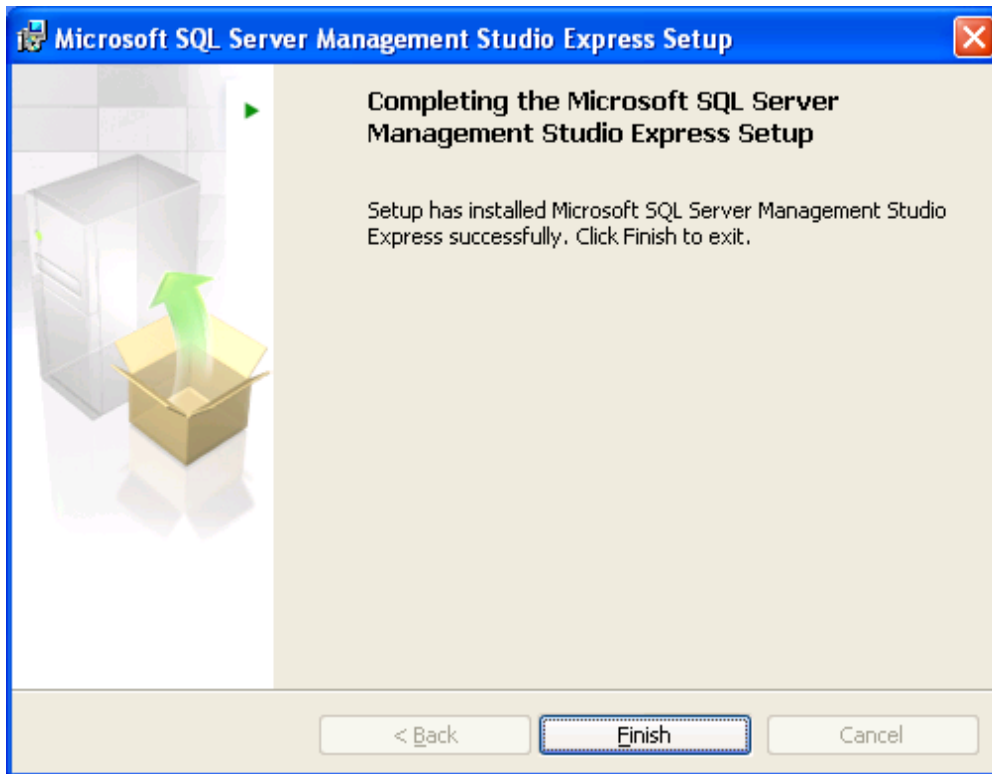
4. On the Feature Selection screen, leave all default values selected and click **Next**.



5. On the Ready to Install screen, click **Install**.



6. Click **Finish** to complet the installation. Your computer may re-boot.



SQL Server 2008 R2 and Express Installation Instructions

Step 1: SQL Server 2008 R2 Installation files

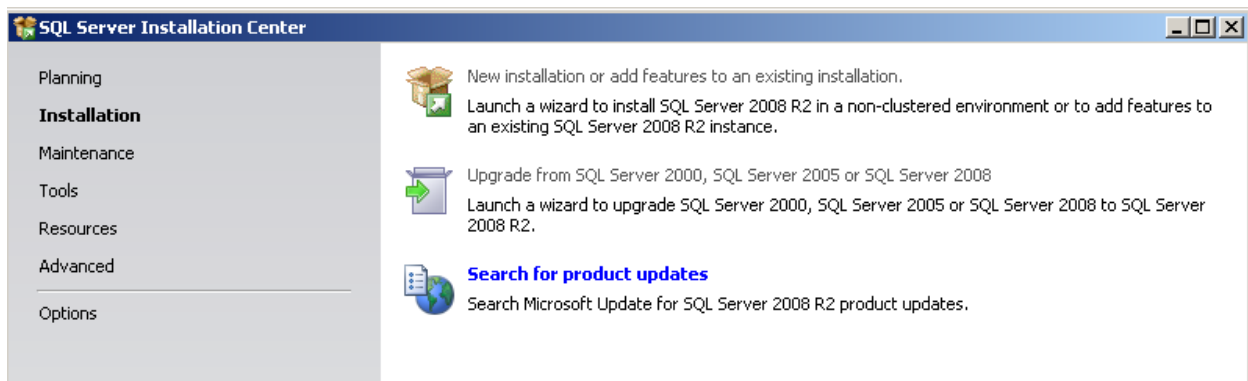
1. If installing the full version of SQL Server, make sure that the Microsoft SQL Server 2008 R2 installation media or installer files are available on the server.

If installing the Express version, download Microsoft SQL Server 2008 Express and SQL Server Express Management Studio from the following link. Select either the 32 or the 64 bit install file as appropriate for your computer.

<http://www.microsoft.com/downloads/details.aspx?FamilyID=967225eb-207b-4950-91df-eeb5f35a80ee&displaylang=en>

Step 2: Install Microsoft SQL Server 2008 R2

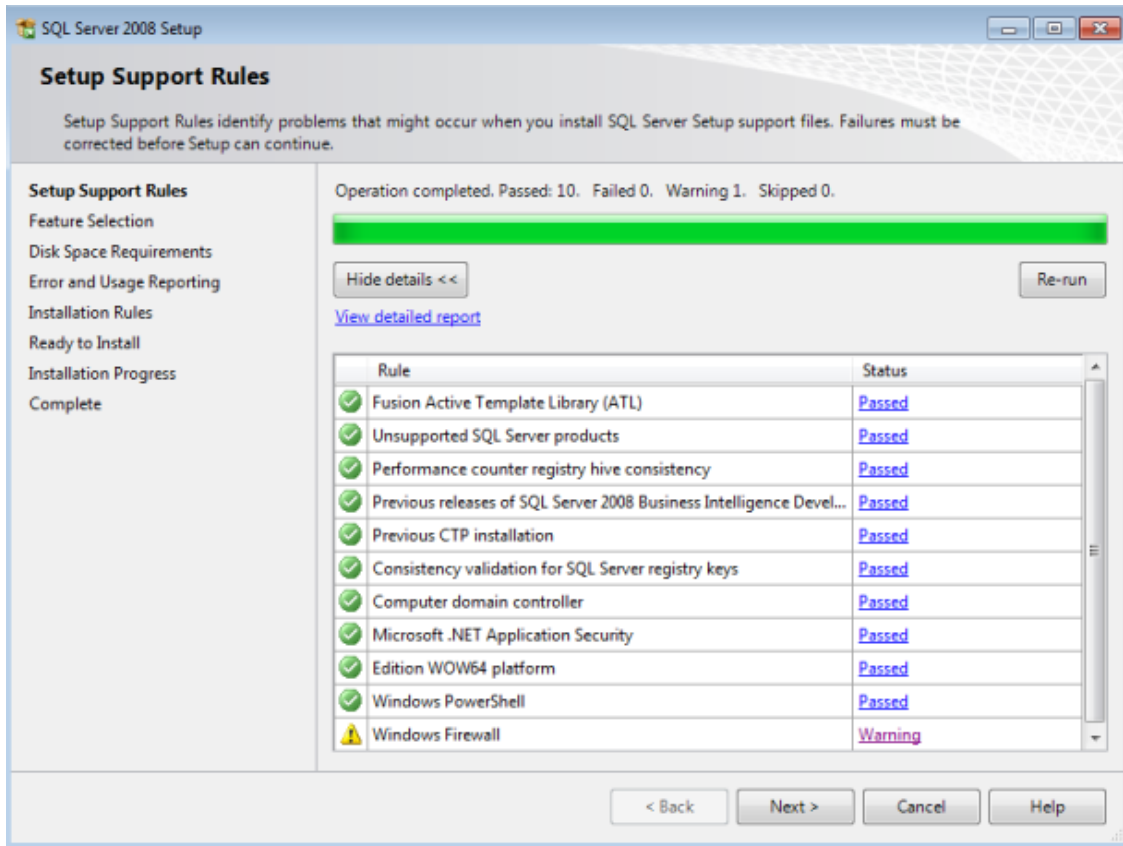
1. Select Start/Run. From the Run screen, browse to the location where the SQL Server 2008 R2 installer file is located and select that file to open. The installer will extract a number of setup files to a temporary folder. This could take a few minutes. Once the installer has extracted all of it's files, you should see the SQL Server Installation Center Window. Click on Installation in the left Frame and then click on New installation or add features to an existing installation as shown below.



2. For the full version of SQL Server, you will be prompted to enter the product key. For the Express version, you will simply need to accept the license terms.
3. The installation process will check to verify that the PC or Server configuration will meet the minimum criteria for its setup rules. When the check is finished, you will see the Setup Support Rules window. If all of the rule checks have passed, and the number of Failed and Warnings is 0, then you can click OK to continue. If there are Failed or Warning items, then you will need to review and resolve those issues as needed, before continuing with the installation.

Depending on whether you are installing the full or Express version, you may see a slightly different list of rule checks. The example show below is from the Express version.

If you have a firewall enabled, then you will probably see that item in the detailed list with a Warning. This just indicates that the installer recognizes that you are running a firewall and need to make sure that it is properly configured.



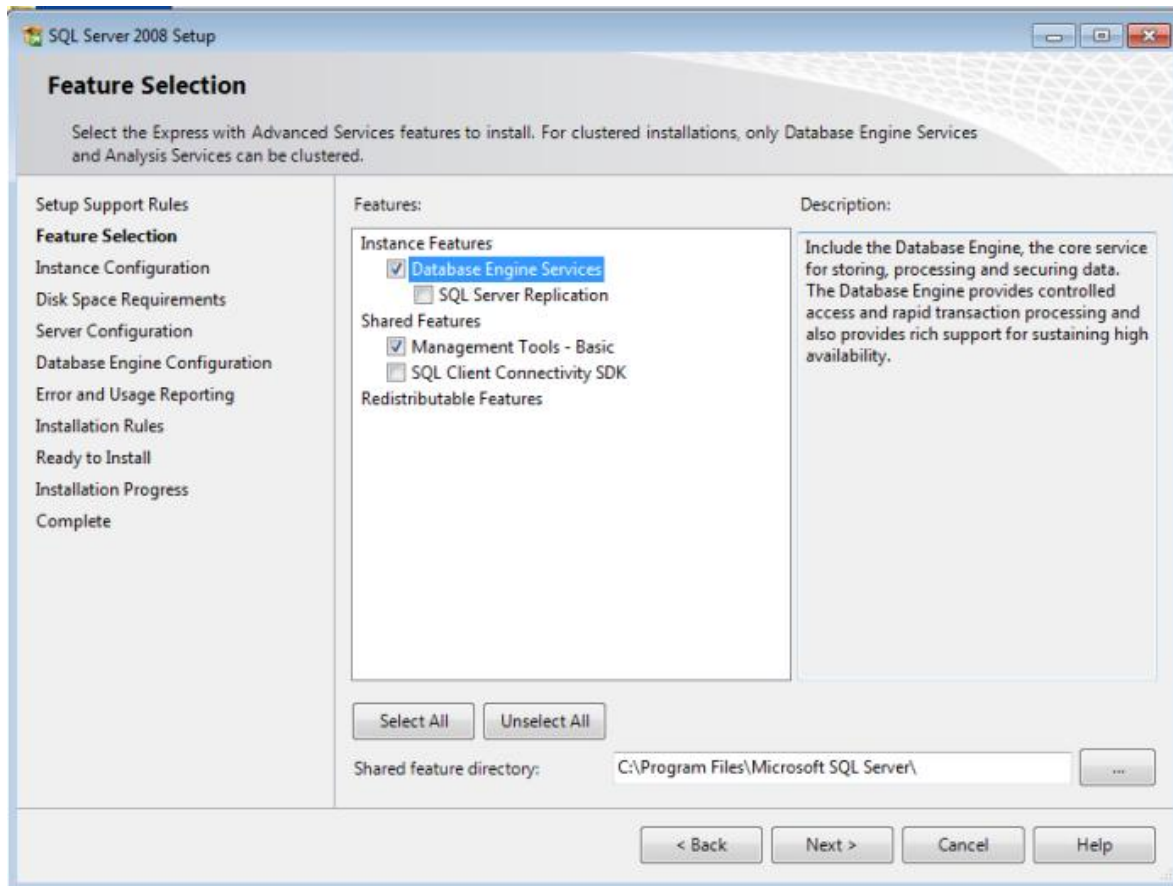
Configuration details for Microsoft Windows based Firewalls, when used with Microsoft Workstation Operating Systems, are included in another reference.

If all of the rules have passed, then click on **Next**.

4. You may see a Setup Role window where you will be prompted to select the method in which the rest of the installation proceeds . In most cases you can use the SQL Server Feature Installation option .

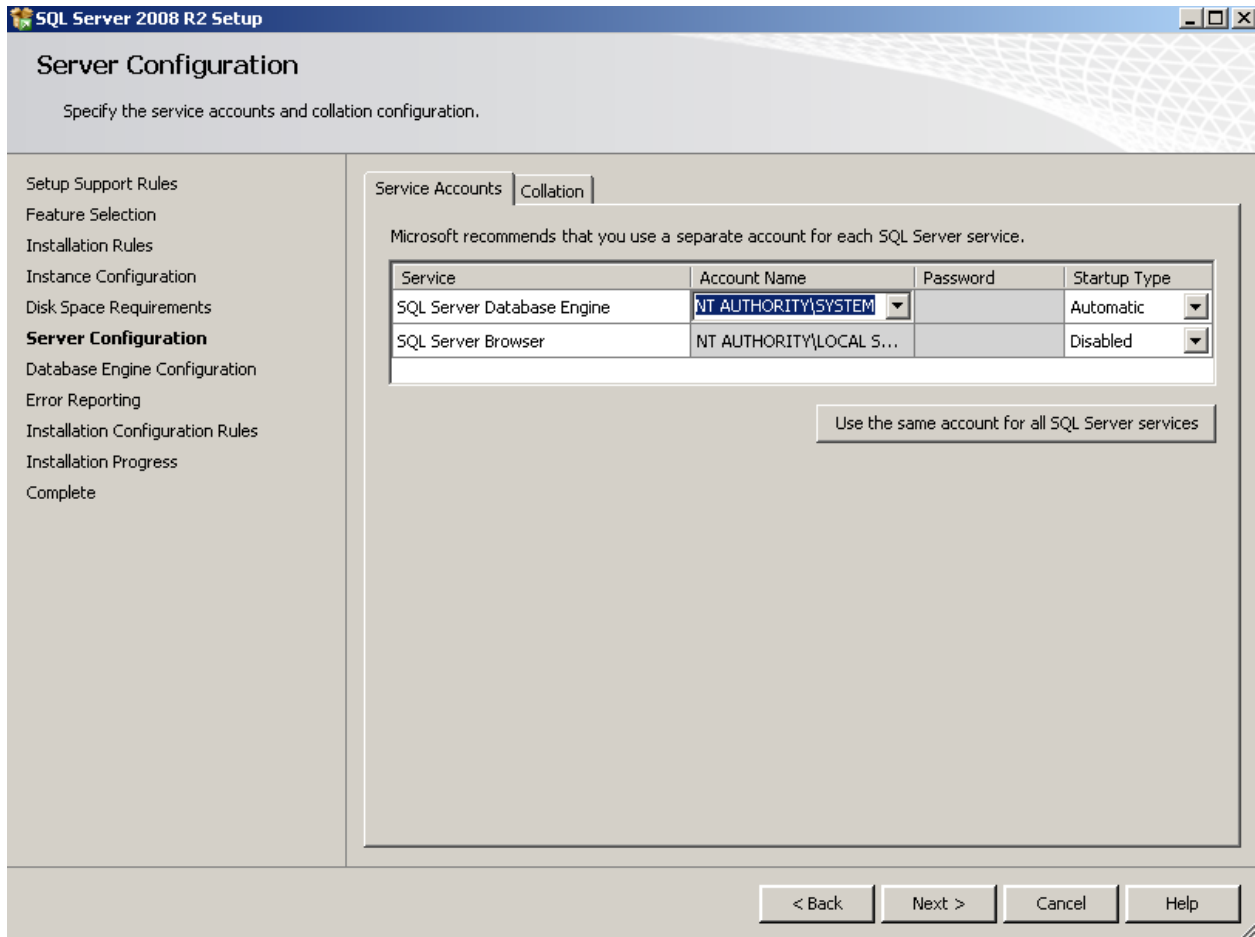
5. Now you will be presented with the Feature Selection window. You will want to select **Database Engine Services** and **Management Tools – Basic**. Then click on **Next**.

NOTE: The Feature Selection Window for the full version will have additional features not shown in the example below. Those additional features are not required for IQSWeb.

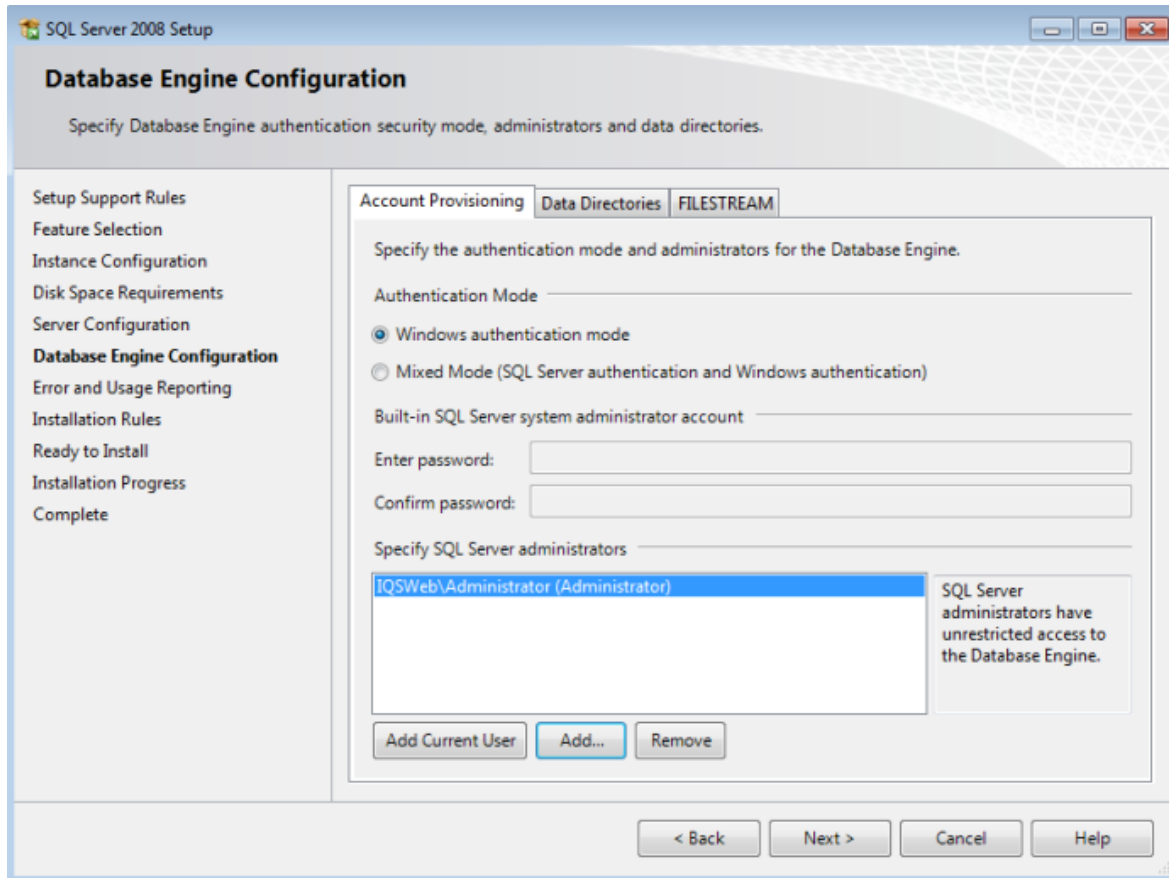


6. Next, you will see the Instance Configuration window. You can accept the default selections and Click on **Next**.

Now, you will see the Server Configuration window. Here you will specify which Windows account will be used by the SQL Server Database Engine Service. In most situations, you will specify **NT Authority / System** in the Account Name drop down box, as shown below. For the full version of the software, you will also need to specify this account for the SQL Server Agent. Once that is done, click on **Next**.



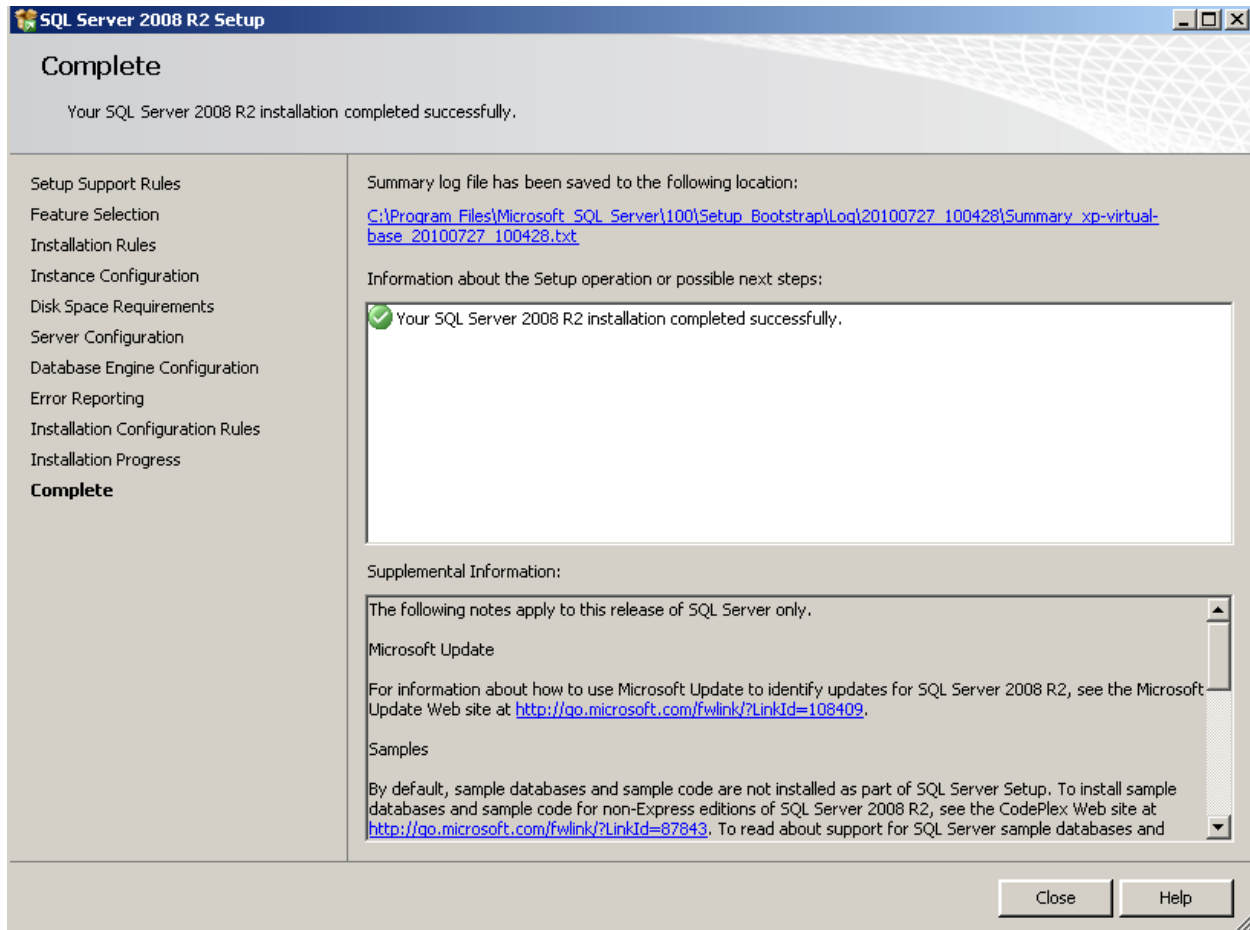
7. Next, you will be presented with a window where you will choose the authentication mode and Administration account(s) for the Database Engine. Select Windows authentication mode, and then add an Administrator equivalent account, as shown below. Once this is completed, you can click on **Next**.



Now you will see the Error Reporting window. You can leave the reporting option unchecked and Click on **Next**. Then you will be presented with a Installation Rules window. As with the earlier Setup Support Rules window, If all of the rule checks have passed, and the number of Failed and Warnings is 0, then you can click **Next** to continue and start the Install. If there are Failed or Warning items, then you will need to review and resolve those issues as needed, before continuing with the installation.

As the installer starts installing the database server, you will see a blue progress bar, and the files names listed as they are being installed.

8. Once the installation has finished, you should see a window like the one shown below, indicating that the Installation is complete. This window will also show the location of the Summary Log file for the installation.



When you click **Close** in the Complete window, you will be returned to the SQL Server Installation Center Window. From there you can choose to search for product updates with Windows Update, or you can close the SQL Server Installation Center Window.

See the instructions in Step 3 of the main Installation Instructions for details on how to use the SQL Server Management Studio to configure SQL Server 2008 R2.