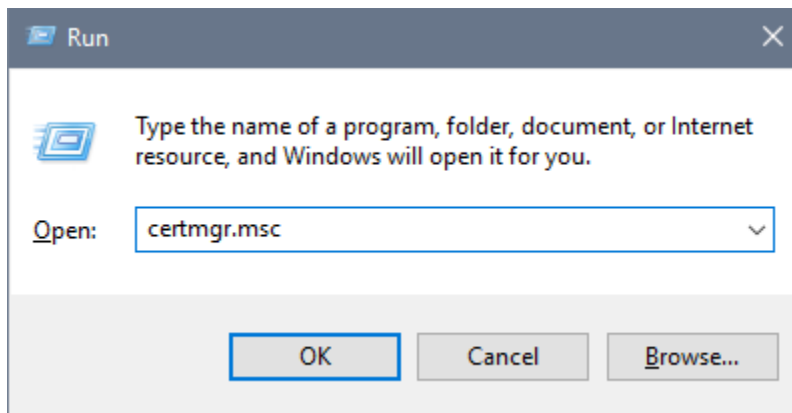


IQSweb Reference H Export ROSS Certificate

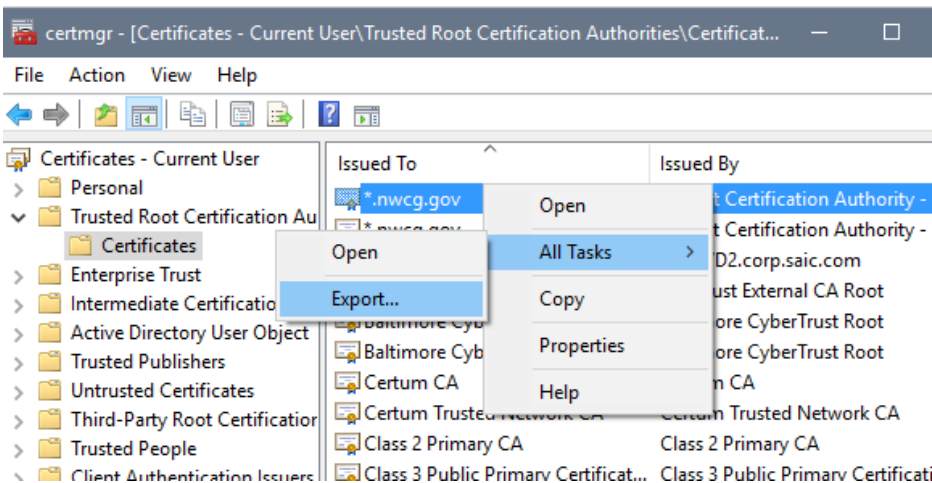
If you are moving your IQS installation (V2.0 or higher) to a different location and you are currently connecting to ROSS, you will need to also move your ROSS SSL Certificate. This document outlines the steps for exporting and then importing your ROSS SSL Certificate to a new location.

Exporting the ROSS SSL Certificate

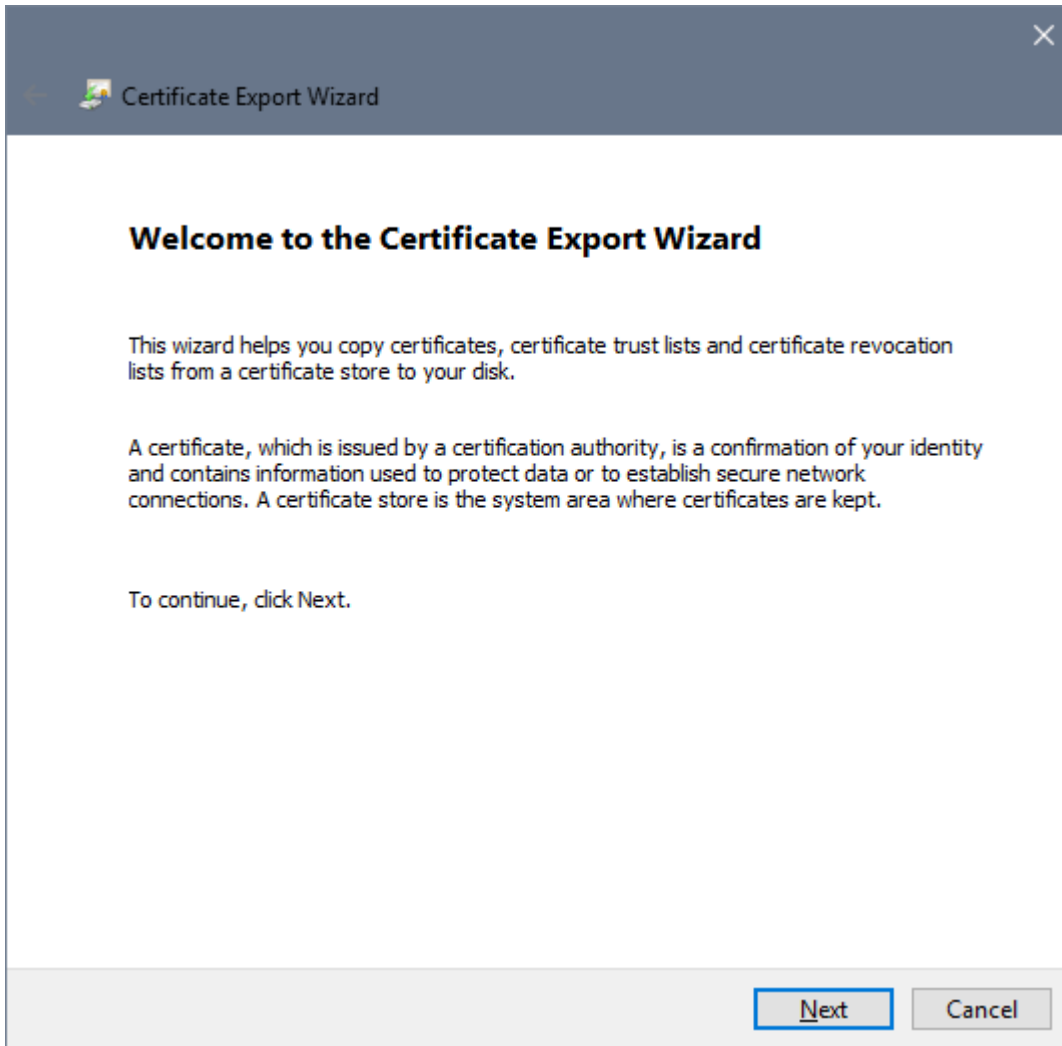
1. On the computer where the ROSS certificate is installed, log in as an administrator. Go to **Start>Run**. Type in **certmgr.msc** and click **OK**.



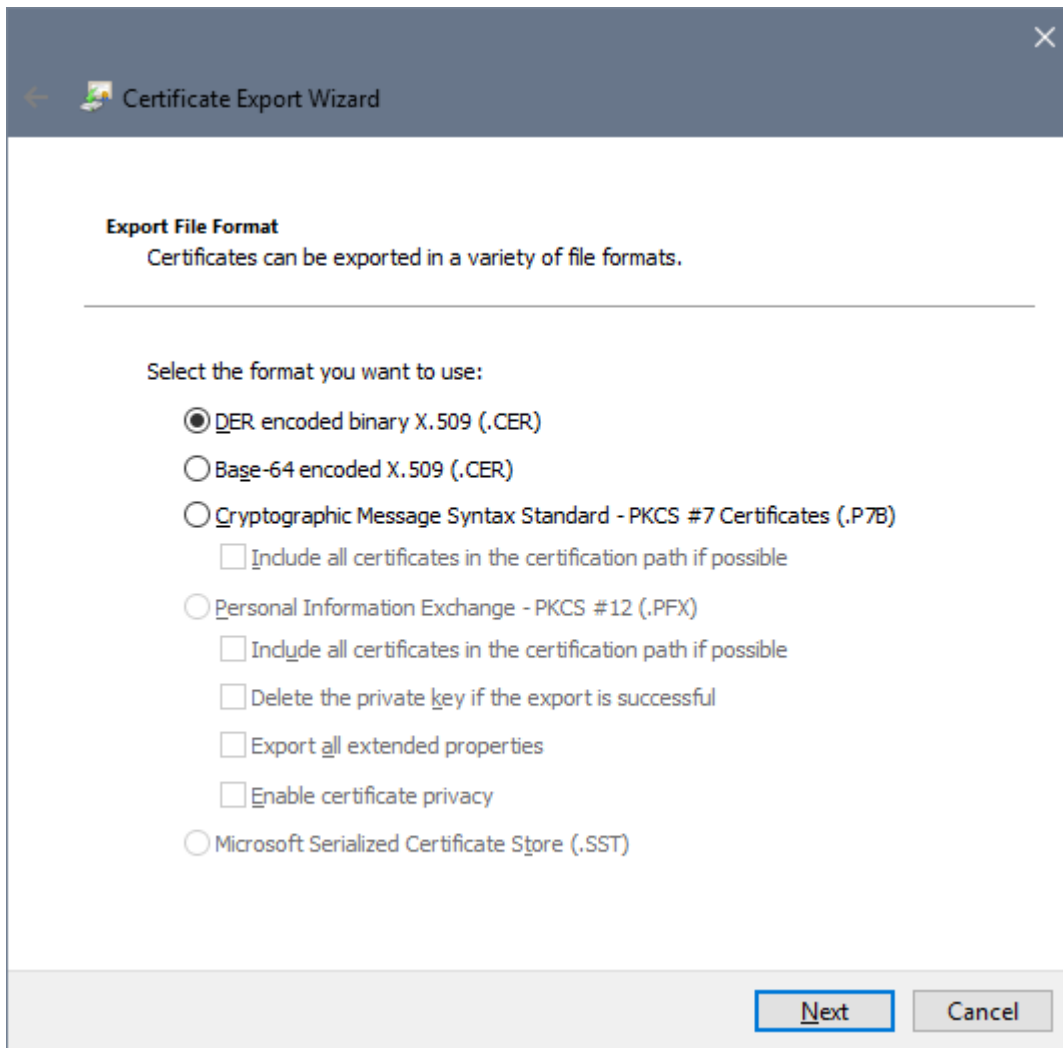
2. The Certificates Manager will appear, expand the folder titled "**Trusted Root Certification Authorities**". Select the "**Certificates**" folder. Find the certificate issued to "***.nwcg.gov**". **Right-click** on this certificate. Select "**All Tasks**", then select "**Export**".



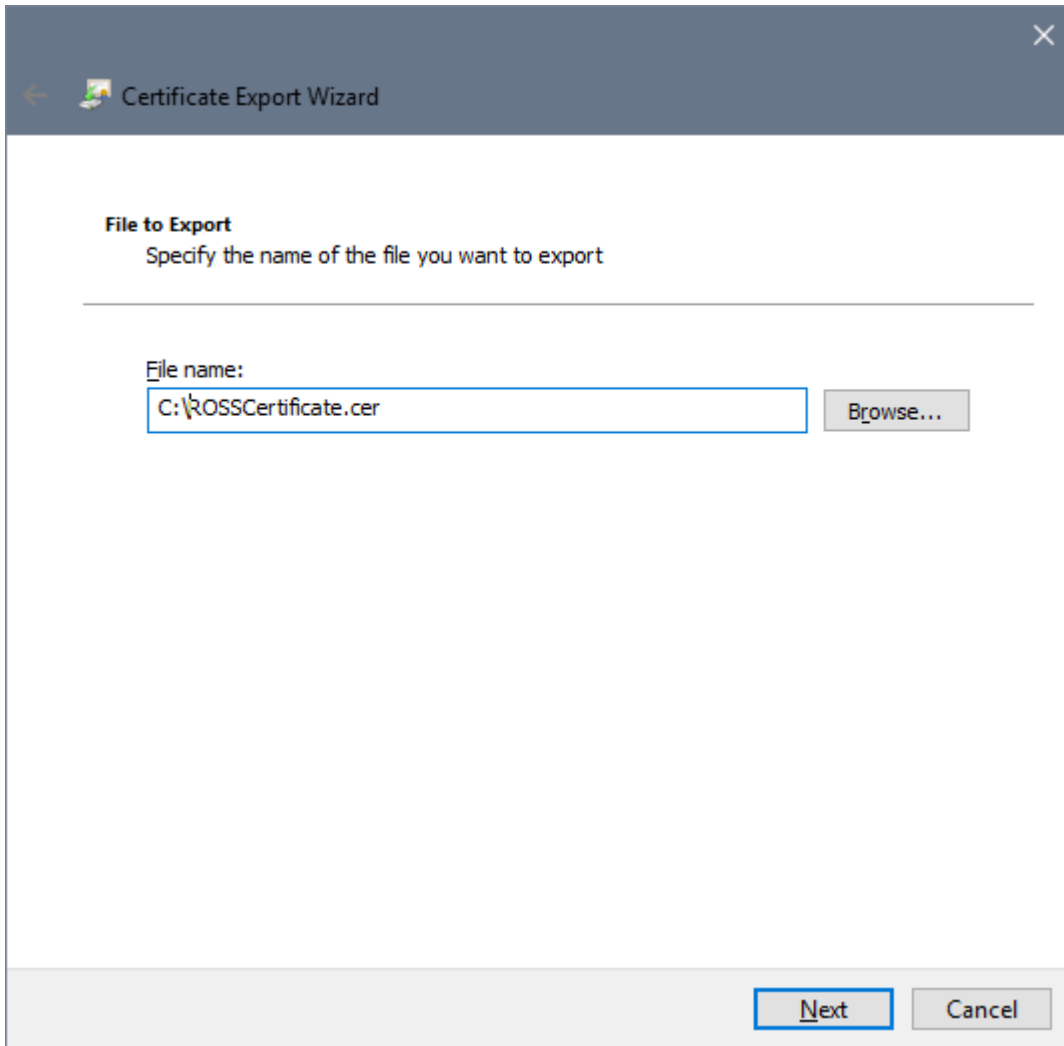
3. In the Wizard that pops-up, click "**Next**".



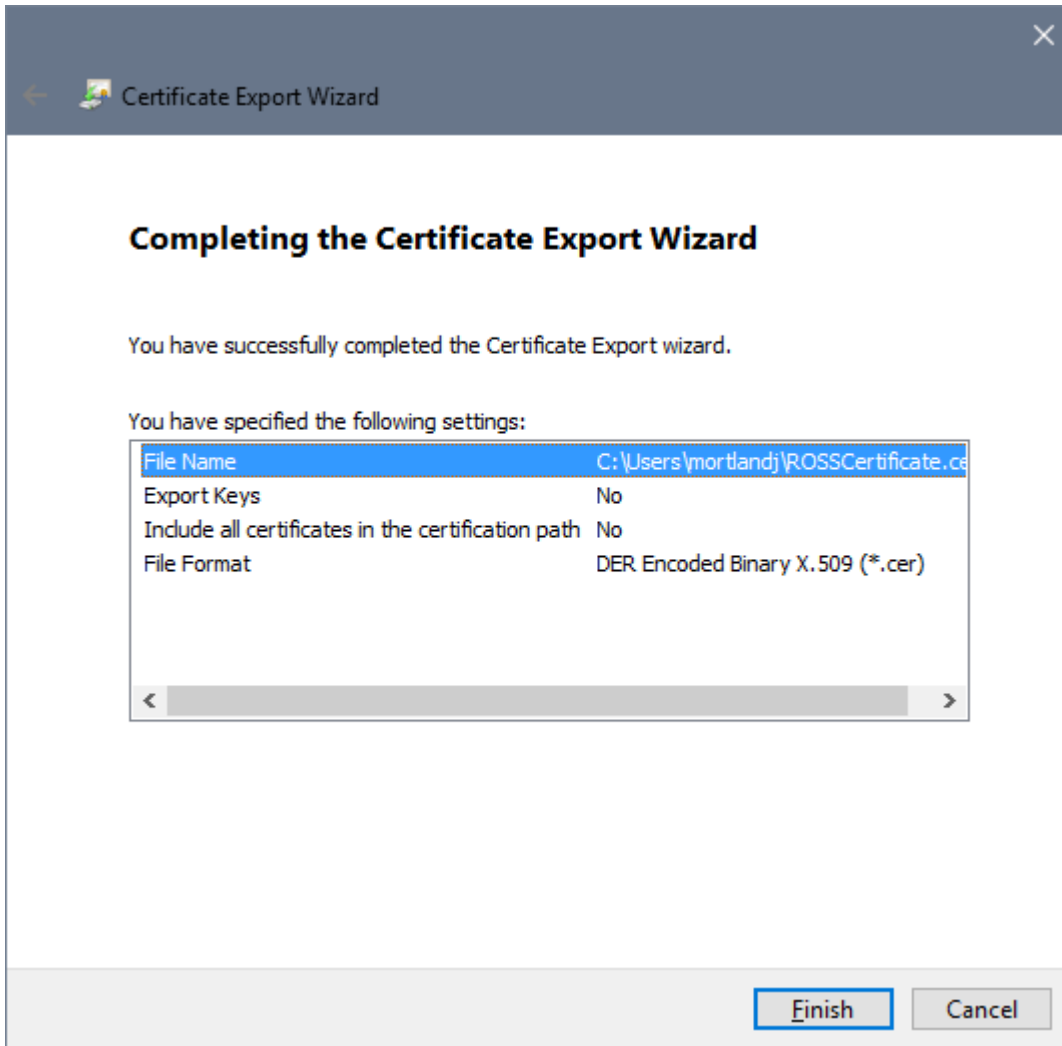
4. Make sure that "DER encoded binary X.509 (.CER)" is selected and click "Next".



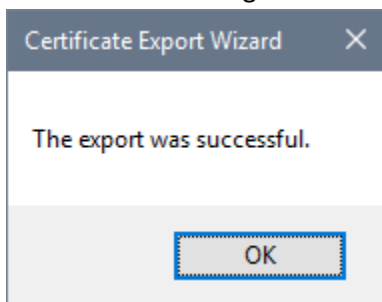
5. Select the filename and location where you want to save the certificate file and click “**Next**”.



6. Click "Finish".



7. You will see a message box that the export was successful.



8. Using the certificate that was just exported, follow the instructions for installing the ROSS Security Certificate found in IQS Web Reference E – ROSS Migration Preregistration.