

## IQSweb Reference G Microsoft Windows Workstation Firewall Settings

This document addresses the Microsoft Windows Workstation Firewall settings related to IIS, when using Desktop Operating Systems for IQSWeb servers for the following Desktop Operating Systems:

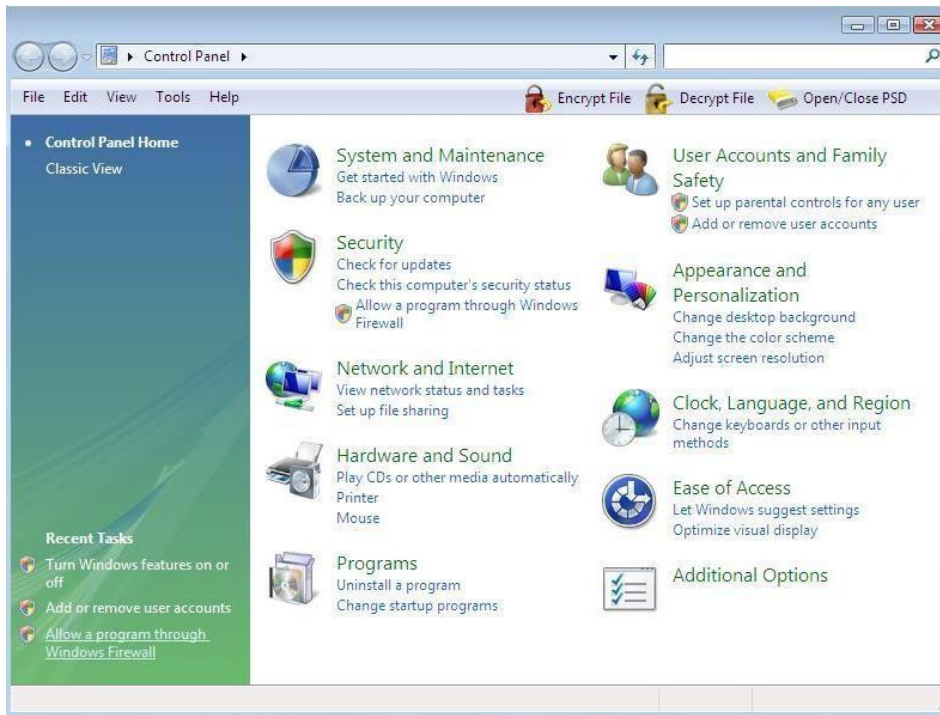
### Windows Vista and 7

After IIS is installed, check the PC firewall settings to make sure that connections can be made to the IIS web server.

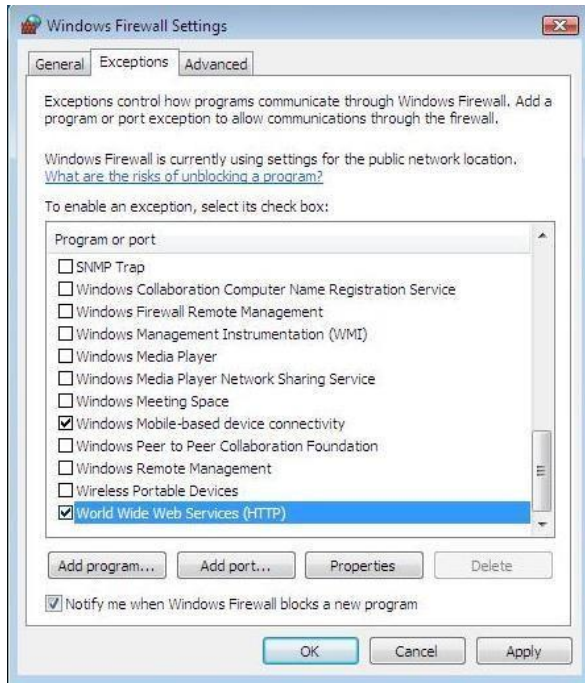
NOTE: If other vendors firewall products are installed, you will need to consult the appropriate documentation to configure for support of IIS web connections.

### Windows Vista

1. From the **Control Panel**, click on Allow a program through Windows Firewall link on the lower left.



2. Make sure that **World Wide Web Services (HTTP)** is checked and then click **OK**. The Windows Firewall is now configured to allow web traffic for IIS and IQSWeb in Windows Vista.



## Windows 7

1. From the **Control Panel**, open **System Security** and then in the **Windows Firewall** category, click on the [Allow a program through Windows Firewall](#) link.



2. Make sure that **World Wide Web Services (HTTP)** is checked and then click **OK**. The Windows Firewall is now configured to allow web traffic for IIS and IQSWeb in Windows 7.

